

KlickFast Connector

The heart of the KlickFast system, incorporated into every radio case. This slim, durable moulding allows quick docking and locking of the case with 7 point ratchet positioning.

1.5" (38mm) Dock

This Dock threads onto a 1.5 inch trouser belt. Also available for 1.25" (32mm) and 2.4" (60mm) belts.

2" (50mm) Dock

The Dock for mounting cases onto a 2 inch belt. As a part of the KlickFast range it naturally allows cases to be docked in seconds.

Sew-on Dock

A nylon Dock which can be stitched onto clothing. The Sew-on Dock makes the KlickFast range supremely versatile.

Stick-on Dock

Same fitting as Sew-on Dock but has been covered with a self adhesive backing for mounting on vehicle dashboards and walls.

Screw-on Dock

With four 4mm diameter recessed mounting holes to allow the Dock to be securely screwed onto walls, vehicle dashboards or into lockers for safe storage.

Use it, don't lose it...

A radio locked into a case that's fixed onto your belt is only of use if you are using a remote mike.

But a radio out of its case is at risk.

That's why we have developed a range of quick release attachments that let you keep your radio in its protective case at all times.

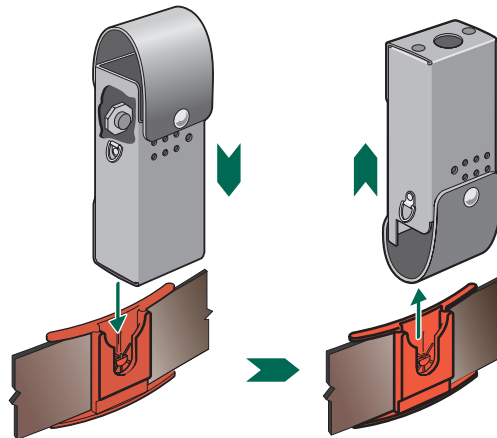
The latest of these is our unique **Klick Fast system**. The Klick Fast connector lets you 'dock' the case anywhere... in your locker for security, on your belt for convenience, in a car or van for hands-free use.

Drop the connector into the dock and it's locked, click it into the most comfortable position and it sticks there... yet twist it round and it is released immediately.

The Klick Fast connector is an option on any current (RangeFinder series) radio case and can easily be added to most cases in our Classic ranges, call for details.

Design Right Applies

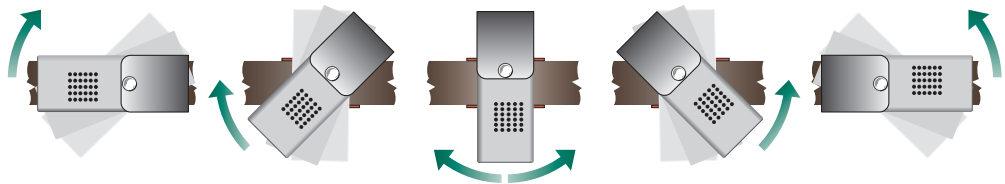
Let's talk about... Klick



Klick Fast is easy and versatile.

- Drop the case into the dock, it's locked (above left)
- Click the case to your most comfortable position, it sticks (below)
- Twist the case to the inverted position and instantly it's free (above right)

NB. Belt Dock shown in red for clarity, standard docks are satin finish black.



Klick Fast system:

combines the benefits of a quick release and ratchet mechanism in one very affordable system



Dash Dock:

fixes the Klick Fast connector to a car or van dashboard



KlickFast Options

Klick Fast Connector (Includes Belt Dock) can be fitted to most cases at an extra cost

Klick Fast Belt Dock 1.25" (32 mm)

(Part Number: **DOCK01**)

Klick Fast Belt Dock 1.5" (38 mm)

(Part Number: **DOCK02**)

Klick Fast Belt Dock 2" (50 mm)

(Part Number: **DOCK03**)

Klick Fast Belt Dock 2.4" (60 mm)

(Part Number: **DOCK07**)

Klick Fast Stick-on Dock with self adhesive backing

(Part Number: **DOCK04**)

Klick Fast Screw Dock

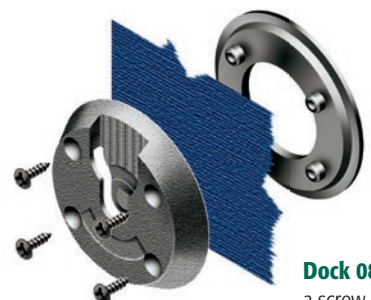
(Part Number: **DOCK05**)

Klick Fast Sew-on Dock

(Part Number: **DOCK06**)

Klick Fast Retro-fit Garment Dock

(Part Number: **DOCK08**)



Dock 08:

a screw-fix dock for use on jackets and outer garments