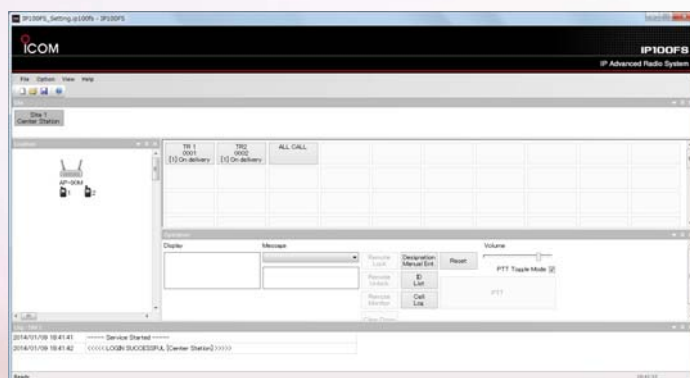




Version 1.0
March 2014

IP Advanced Radio System *IP100H / IP1000C / IP100FS* *Demonstration Setup* *Guide*



Icom Inc.

OUTLINE

This guide is designed to provide demonstration setup guide about Icom's IP ADVANCED RADIO SYSTEM, based on the IP100H's firmware Revision 1.02 and IP1000C's firmware Revision 1.02.

If you have any questions about this guide, please contact your local Icom distributors.

Guide Revisions

Icom reserves the right to make changes to the content of this guide at any time without notice or obligation.

Trademarks

Icom, Icom Inc. and the Icom logo are registered trademarks of Icom Incorporated (Japan) in the United States, the United Kingdom, Germany, France, Spain, Russia, Japan and/or other countries.

Windows and Windows Vista are either registered trademarks or trademarks of Microsoft Corporation in the United States and/or other countries.

IDAS is a trademark of Icom Incorporated.

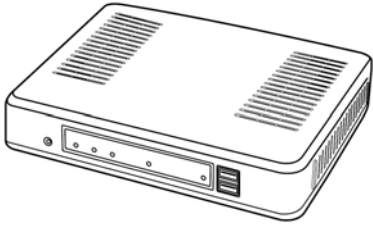



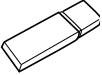
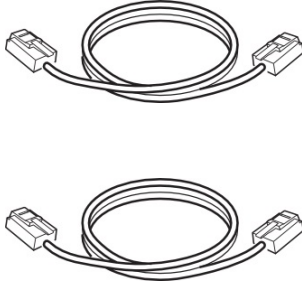
© 2014 Icom Inc.

TABLE OF CONTENTS

SECTION 1	REQUIRED EQUIPMENT	1
SECTION 2	SETTING EXAMPLES	2
	2-1 STAND ALONE NETWORK CONNECTION AND IP ADDRESS SETTINGS	2
	2-2 IP NETWORK CONNECTIONS AND SETTING EXAMPLES.....	9
	2-3 HOW TO SET AND USE THE ID LIST.....	16
	2-4 HOW TO ENTER AND SEND A MESSAGE	21
	2-5 HOW TO SET AND USE THE IP100FS	27
SECTION 3	Q & A.....	51

SECTION 1 REQUIRED EQUIPMENT

The following equipment is required to demonstrate the system.

<p>IP1000C</p> 	<p>IP100H (2 units)</p> 	<p>Access point</p> <ul style="list-style-type: none"> • IEEE802.11a/g • Recommendation: Optional AP-90M 
<p>PC With one of the following OSs installed.</p> <ul style="list-style-type: none"> • Windows® 8 (32/64bit) • Windows® 7 (32/64bit) • Windows Vista® (32bit) (Home Premium / Professional / Ultimate (or equivalent) editions are supported.) 	<p>IP100FS</p> 	<p>LAN cable (2 cables)</p> 
<p>CLONING CABLES (For IP100H, both cables are required)</p> <ul style="list-style-type: none"> • OPC-2144 • OPC-478UC 	<p>CLONING SOFTWARE (For IP100H) CS-IP100H</p>	

SECTION 2 SETTING EXAMPLES

2-1 STAND ALONE NETWORK CONNECTION AND IP ADDRESS SETTINGS

Set an access point, PC, IP1000C and IP100H using the following steps.

IMPORTANT! We recommend that you connect the access point, IP1000C and PC in a standalone configuration. If you connect them to your local network with the following connection settings, your local network may not operate correctly. (IP addresses may overlap.)

STEP 1: CONNECTION EXAMPLE



STEP 2: ACCESS POINT SETTINGS



STEP 3: IP1000C SETTINGS



STEP 4: IP100H SETTINGS

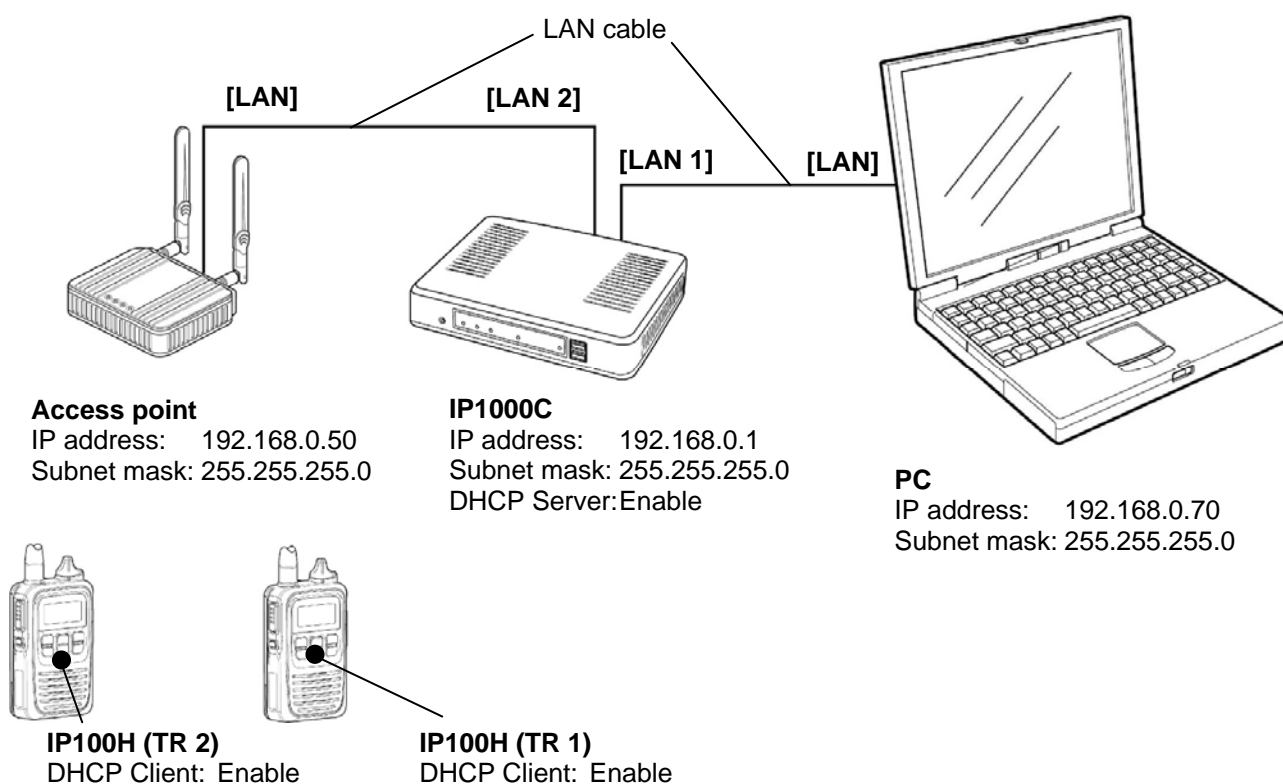


STEP 5: DEMONSTRATION



STEP 1: CONNECTION EXAMPLE

See each equipment's instruction manual for connection details.





STEP 2: ACCESS POINT SETTINGS

Set your access point's **IP address** to **192.168.0.50**, and **SSID** to **WAVEMASTER-0**.

IMPORTANT! If you turn ON the Hide SSID function when using IEEE802.11a, the IP100Hs may not connect to the access point.

[RECOMMENDATION]

We recommend that you set the access point's authentication as follows:

For example:

- Authentication: WPA-PSK-WPA2-PSK
- Encryption Type: TKIP-AES
- PSK: 5cf97dgh6



STEP 3: IP1000C SETTINGS

Setting steps are as follows.

STEP 3-1 The DHCP Server settings

STEP 3-2 Common settings

STEP 3-3 The IP100H (TR 1) settings

STEP 3-4 The IP100H (TR 2) settings

STEP 3-1 The DHCP Server settings

The screenshot shows the 'Network Settings' menu with 'DHCP Server' selected. A red box highlights 'DHCP Server' and a red arrow points to a 'Click' button. Below, the 'DHCP Server' configuration page is shown. A red arrow points to the 'Enable' radio button, labeled 'Select'. Another red arrow points to the 'Apply' button, labeled 'Click'. A large downward arrow indicates the next step. At the bottom, a red box highlights the 'Reboot' button, labeled 'Click', with a note: 'A reboot is required to apply all the new settings.'

STEP 3-2 Common settings

▼ Common Settings

Wireless LAN

ID List

Messages

Status

Common Settings

Click

Common Settings (Tenant1)

Common Settings

No.: 1

Wireless LAN: Transceiver's Setting

Common Settings

ID List: Disable

Message List: Disable

Apply

Reset

Click

Common Settings (Tenant1)

Common Setting List

No.	Wireless LAN	ID List Number	Common Message Group		
1	Transceiver's Setting	Disable	Disable	Edit	Delete

Delete All

Confirm

STEP 3-3 The IP100H (TR 1) settings

▼ Transceiver Settings

Transceiver Status

Transceiver Registration

Transceiver Settings

Click

Transceiver Registration (Tenant1)

Reboot the transceiver if you change the settings on this page.

Transceiver Settings

TRX No.: 1

Transceiver Model: IP100H

Name: Sales1

Unit ID: 0001

Security

Password: iptrx

Connection Port

Transceiver Port Number: 30000

Server Port Number: 30000

Common Settings

Group: 1

Enter

Apply

Reset

Click

STEP 3-4 The IP100H (TR 2) settings

Transceiver Registration (Tenant1)

Reboot the transceiver if you change the settings on this page.

Transceiver Settings

TRX No.: 2

Transceiver Model: IP100H

Name: Sales2

Unit ID: 0002

Security

Password: iptrx

Connection Port

Transceiver Port Number: 30002

Server Port Number: 30002

Common Settings

Group: 1

Enter

Apply

Reset

Click

[Confirm the IP100H (TR 1 and TR 2) settings]

Transceiver Setting Entry List

TRX No.	Transceiver Model	Name	Unit ID	Connection Port		Group		
				Transceiver	Server			
1	IP100H	Sales1	0001	30000	30000	1	Edit	Delete
2	IP100H	Sales2	0002	30002	30002	1	Edit	Delete

Confirm



STEP 4: IP100H SETTINGS (A CS-IP100H is necessary to set up the IP100H)

BEFORE you use a CS-IP100H, the following procedures are required. See the CS-IP100H and OPC-478UC instruction manuals for setting and installation details.

- Install the CS-IP100H (Cloning software)
- Install the OPC-478UC (Cloning cable)'s USB driver
- Connect the OPC-478UC and the IP100H
- Run the CS-IP100H

The setting steps are as follows:

STEP 4-1 TR 1 settings

STEP 4-2 TR 2 settings

STEP 4-1 TR 1 settings

IP100H

- Wireless LAN Settings
- Provisioning Server Settings

Wireless LAN Settings	
Encryption	
SSID	WAVEMASTER-0
Authentication	WPA-PSK/WPA2-PSK
Encryption Type	TKIP/AES
PSK	*****

Enter the same SSID as the access point

Select

Enter the same PSK as the access point
(Enter "5cf97dgh6" here)

IP100H

- Wireless LAN Settings
- Provisioning Server Settings

Provisioning Server Settings	
IP Address	192.168.0.1
TRX No.	1
Password	*****

IP1000C's setting screen

▼ Network Settings

IP Address

DHCP Server

Static Routing

IP Address

IP Address: 192.168.0.1

Subnet Mask: 255.255.255.0

▼ Transceiver Settings

Transceiver Status

Transceiver Registration

Transceiver Settings

Reboot the transceiver if you change the settings on this page.

Transceiver Registration (Tenant1)

Transceiver Settings

TRX No.: 1

Transceiver Model: IP100H

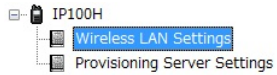
Name: Sales1

Unit ID: 0001

Security

Password: iptrx

STEP 4-2 TR 2 settings

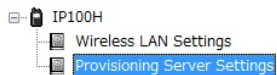


Wireless LAN Settings	
Encryption	
SSID	WAVEMASTER-0
Authentication	WPA-PSK/WPA2-PSK
Encryption Type	TKIP/AES
PSK	*****

Enter the same SSID as the access point

Select

Enter the same PSK as the access point
(Enter "5cf97dgh6" here)



Provisioning Server Settings	
IP Address	192.168.0.1
TRX No.	2
Password	*****

IP1000C's setting screen

Network Settings

IP Address

DHCP Server
Static Routing

IP Address

IP Address: 192.168.0.1
Subnet Mask: 255.255.255.0

Transceiver Settings

Transceiver Registration (Tenant1)

Transceiver Status
Transceiver Registration
Transceiver Settings

Reboot the transceiver if you change the settings on this page.

Transceiver Settings

TRX No.: 2
Transceiver Model: IP100H
Name: Sales2
Unit ID: 0002
Security
Password: iptrx

STEP 1



STEP 2



STEP 3

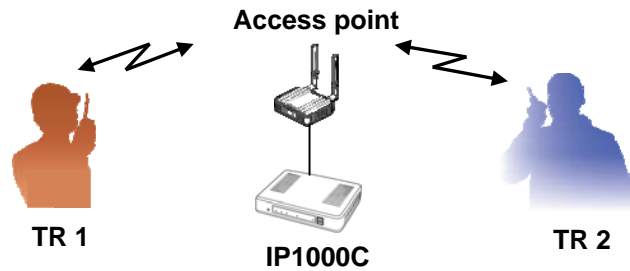


STEP 4



STEP 5

STEP 5: DEMONSTRATION [Talking between TR 1 and TR 2]



(1) Turn ON the IP100H's power (TR 1 and TR 2).

NOTE: When connection is finished, icon appears on the display.

If the icon does not appear on the display, check the following items.

- Check the access point setting.
- Check the IP100H's cloning setting.
- Check the IP1000C's setting.

(2) Hold down TR 1's **[PTT]**, and then speak into the microphone at a normal voice level.
Your voice is heard from TR 2's speaker.

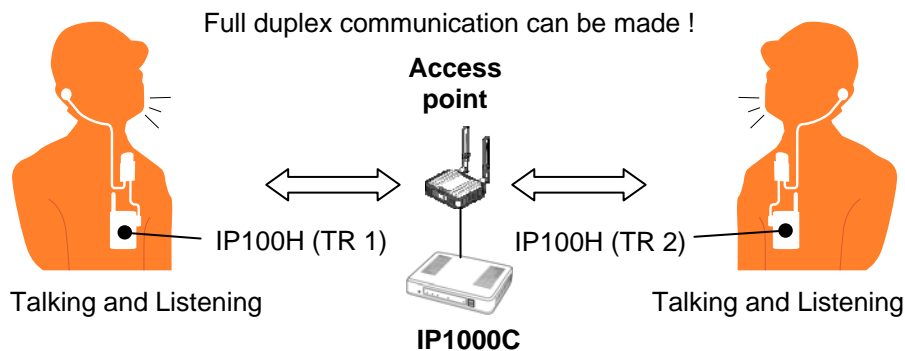
After speaking, release **[PTT]** to listen.

(3) Hold down TR 2's **[PTT]**, and then speak into the microphone at a normal voice level.
Your voice is heard from TR 1's speaker.

After speaking, release **[PTT]** to listen.

CONVENIENT!

When you use the IP100H with optional HM-153LS or HM-166LS EARPPHONE-MICROPHONE, you can use the IP100H in hand-free operation (full duplex mode).



2-2 IP NETWORK CONNECTIONS AND SETTING EXAMPLES

If you want to connect the IP ADVANCED SYSTEM to an existing IP network, set an access point, PC, IP1000C and IP100H as shown in the following steps.

IMPORTANT! Two static IP addresses are required for setting of the access point and the IP1000C. Ask your system administrator for details for about the IP addresses.
If another DHCP server is already working in the IP network, turn OFF the IP1000C's DHCP server function.

STEP 1: IP1000C'S IP ADDRESS SETTING



STEP 2: CONNECTION EXAMPLE



STEP 3: ACCESS POINT SETTINGS



STEP 4: IP1000C SETTINGS



STEP 5: IP100H SETTINGS



STEP 6: DEMONSTRATION

STEP 1

STEP 2

STEP 3

STEP 4

STEP 5

STEP 6

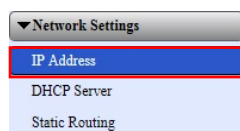
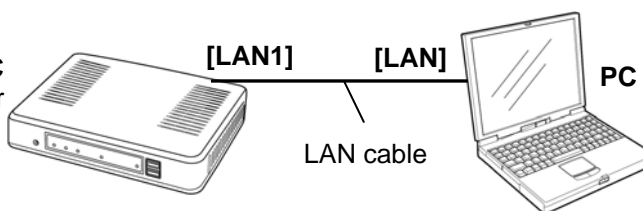
STEP1: IP1000C'S IP ADDRESS SETTING

Before you connect the IP1000C to an IP network, ask your system administrator for the IP1000C's IP address.

Connect a PC and the IP1000C via a LAN cable, and then enter it into the field as follow.

Ask your system administrator for the IP address and subnet mask.

IP1000C



Click

IP Address

IP Address

IP Address:

Subnet Mask:

255.255.255.0

Enter

Enter

Click

Apply Reset

IP Address

Reboot

A reboot is required to apply all the new settings.

Click

STEP 1

STEP 2

STEP 3

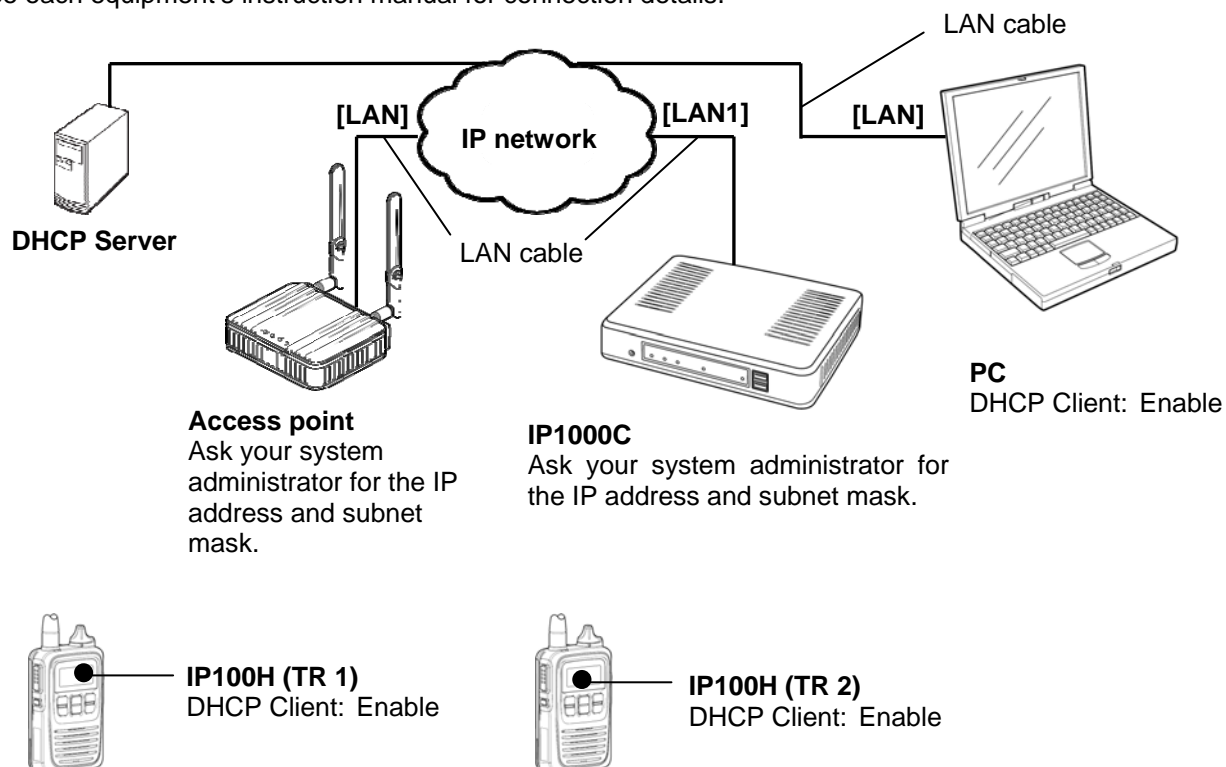
STEP 4

STEP 5

STEP 6

STEP2: CONNECTION EXAMPLE

See each equipment's instruction manual for connection details.



STEP 1

STEP 2

STEP 3

STEP 4

STEP 5

STEP 6

STEP3: ACCESS POINT SETTINGS

Ask your system administrator for the access point's IP address, and then enter it into the access point field, and then set the **SSID** to **WAVEMASTER-0**.

IMPORTANT! If you turn ON the Hide SSID function on IEEE802.11a, IP100H may not connect to the access point.

[RECOMMENDATION]

We recommend that you set the access point's authentication as follows:

For example:

- Authentication: WPA-PSK·WPA2-PSK
- Encryption Type: TKIP·AES
- PSK: 5cf97dgh6



STEP 4: IP1000C SETTINGS

The setting steps are as follows:

STEP 4-1 The DHCP Server confirming

STEP 4-2 Common settings

STEP 4-3 The IP100H (TR 1) setting

STEP 4-4 The IP100H (TR 2) setting

STEP 4-1 The DHCP Server confirming

If another DHCP server is already working in the IP network, confirm to turn OFF the IP1000C's DHCP server function as follows.

Network Settings

- IP Address
- DHCP Server**
- Static Routing

DHCP Server

DHCP Server: ☒ Disable ☐ Enable

Click

Confirm

STEP 4-2 Common settings

Common Settings

- Wireless LAN
- ID List
- Messages
- Status
- Common Settings**

Common Settings (Tenant1)

Common Settings

No.: 1

Wireless LAN: Transceiver's Setting

Common Settings

ID List: Disable

Message List: Disable

Apply Reset

Click

Common Settings (Tenant1)

Common Setting List

No.	Wireless LAN	ID List Number	Common Message Group	Edit	Delete
1	Transceiver's Setting	Disable	Disable		

Delete All

Confirm

STEP 4-3 The IP100H (TR 1) settings

▼ Transceiver Settings

Transceiver Status

Transceiver Registration

Transceiver Settings

Click

Transceiver Registration (Tenant1)

Reboot the transceiver if you change the settings on this page.

Transceiver Settings

TRX No.:1

Transceiver Model:IP100H

Name:Sales1

Unit ID:0001

Security

Password:iptrx

Connection Port

Transceiver Port Number:30000

Server Port Number:30000

Common Settings

Group:1

Enter

ApplyReset

Click

STEP 4-4 The IP100H (TR 2) settings

Transceiver Registration (Tenant1)

Reboot the transceiver if you change the settings on this page.

Transceiver Settings

TRX No.:2

Transceiver Model:IP100H

Name:Sales2

Unit ID:0002

Security

Password:iptrx

Connection Port

Transceiver Port Number:30002

Server Port Number:30002

Common Settings

Group:1

Enter

ApplyReset

Click

[Confirm the IP100H (TR 1 and TR 2) settings]

Transceiver Setting Entry List

TRX No.	Transceiver Model	Name	Unit ID	Connection Port		Group		
				Transceiver	Server			
1	IP100H	Sales1	0001	30000	30000	1	Edit	Delete
2	IP100H	Sales2	0002	30002	30002	1	Edit	Delete

Confirm



STEP 5: IP100H SETTINGS (A CS-IP100H is necessary to set up the IP100H)

The setting steps are as follows.

STEP 5-1 TR 1 settings

STEP 5-2 TR 2 settings

STEP 5-1 TR 1 settings

IP100H

- Wireless LAN Settings
- Provisioning Server Settings

Wireless LAN Settings	
Encryption	
SSID	WAVEMASTER-0
Authentication	WPA-PSK/WPA2-PSK
Encryption Type	TKIP/AES
PSK	*****

Enter the same SSID as the access point

Select

Enter the same PSK as the access point (Enter "5cf97dgh6" here)

IP1000C's setting screen

NOTE: Ask your system administrator for the IP1000C's IP address.

▼ Network Settings

IP Address

DHCP Server

Static Routing

IP Address

IP Address: [Field]

Subnet Mask: [Field]

▼ Transceiver Settings

Transceiver Status

Transceiver Registration

Transceiver Settings

Reboot the transceiver if you change the settings on this page.

Transceiver Settings

TRX No.: 1

Transceiver Model: IP100H

Name: Sales1

Unit ID: 0001

Security

Password: iptrx

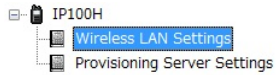
Provisioning Server Settings

IP Address

TRX No. 1

Password *****

STEP 5-2 TR 2 settings

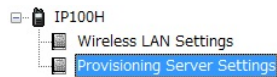


Wireless LAN Settings	
Encryption	
SSID	WAVEMASTER-0
Authentication	WPA-PSK/WPA2-PSK
Encryption Type	TKIP/AES
PSK	*****

Enter the same SSID as the access point

Select

Enter the same PSK as the access point
(Enter "5cf97dgh6" here)



Provisioning Server Settings	
Provisioning Server Settings	
IP Address	*****
TRX No.	2
Password	*****

IP1000C's setting screen

NOTE: Ask your system administrator for the IP1000C's IP address.

Network Settings

IP Address

DHCP Server

Static Routing

Transceiver Settings

Transceiver Status

Transceiver Registration

Transceiver Settings

IP Address

IP Address:

Subnet Mask:

Transceiver Registration (Tenant1)

Reboot the transceiver if you change the settings on this page.

Transceiver Settings

TRX No.:

Transceiver Model:

Name:

Unit ID:

Security

Password:

STEP 1

STEP 2

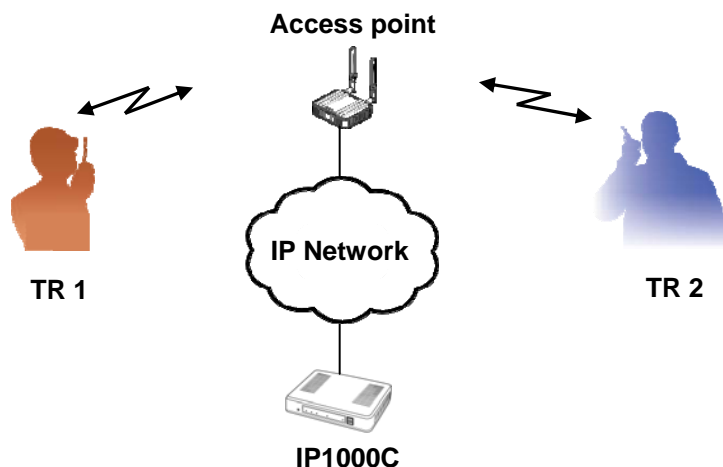
STEP 3

STEP 4

STEP 5


STEP 6

STEP 6: DEMONSTRATION [Talk between TR 1 and TR 2]



- (1) Turn ON the IP100H's power (TR 1 and TR 2).

NOTE: When connection is finished,  icon appears on the display.

If the  icon does not appear on the display, check the following items.

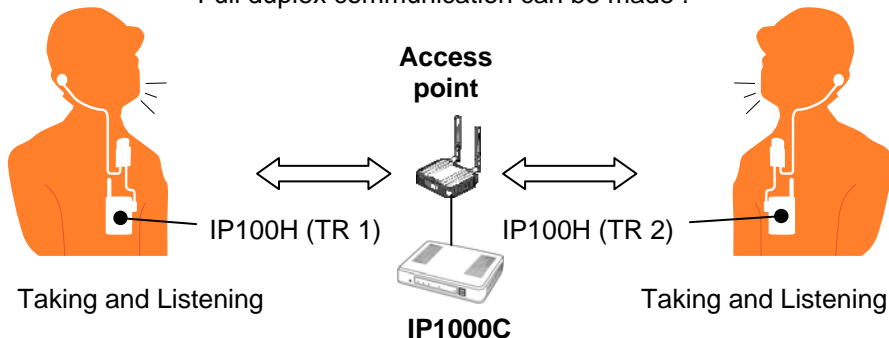
- Check the access point setting.
- Check the IP100H's cloning setting.
- Check the IP1000C's setting.

- (2) Hold down TR 1's **[PTT]**, and then speak into the microphone at a normal voice level.
Your voice is heard from TR 2's speaker.
After speaking, release **[PTT]** to listen.
- (3) Hold down TR 2's **[PTT]**, and then speak into the microphone at a normal voice level.
Your voice is heard from TR 1's speaker.
After speaking, release **[PTT]** to listen.

CONVENIENT!

When you use the IP100H with optional HM-153LS or HM-166LS EARPHONE-MICROPHONE, you can use the IP100H in hand-free operation (full duplex mode).

Full duplex communication can be made !



2-3 HOW TO SET AND USE THE ID LIST

BEFORE you set the ID list, you must first complete the steps in 2-1 STAND ALONE NETWORK CONNECTION AND IP ADDRESS or 2-2 IP NETWORK CONNECTIONS AND SETTING EXAMPLES.

The IP1000C has an ID list function. If you want to initiate a group call or an individual call, register the name and ID into the list.

STEP 1: GROUP ID SETTINGS (IF REQUIRED)



STEP 2: ENTER THE DESTINATION ID



STEP 3: ID LIST GROUP NUMBER SETTING



STEP 4: USE ID LIST SETTING



STEP 5: DEMONSTRATION



STEP 1: GROUP ID SETTINGS (IF REQUIRED)

NOTE: If you want to use the IP ADVANCED SYSTEM to make only individual calls, skip this step and go to STEP 2.

Set the ID list group to make group calls.

Enter the group call number and select the group members into this step.

(Setting example)

- Group name: Group1
- Group number: 0001
- Group member: 0001 (Sales1), 0002 (Sales2)

Destination Settings (Tenant1)

Destination Setting

No.: 1
 Name: Group1
 Call Type: Group
 Destination ID: 0001

Destination Group

Communication Type: ☐ Simplex ☒ Full-Duplex

Transceiver Selection

☒ 0001(Sales1) ☒ 0002(Sales2)

Buttons: Apply, Reset

Destination Settings (Tenant1)

List of Destination Setting Entries (Group Call)

No.	Name	Destination ID	Number of Transceivers	
1	Group1	0001	2	Edit Delete

STEP 1

**STEP 2**

STEP 3



STEP 4



STEP 5

STEP 2: ENTER THE DESTINATION ID

Select the individual and group numbers in the ID list.

If you want to enter two or more destination IDs, repeat STEP 2.

(Setting example)

No.	Name	Call Type	Destination ID
1	Sales1	Individual	0001
2	Sales2	Individual	0002
3	Group call	Group	0001

▼ Common Settings

- Wireless LAN
- ID List**
- Messages
- Status
- Common Settings

Click

ID List (Tenant1)

Reboot the transceiver if you change the settings on this page.

ID List Common Settings

Select

ID List Common Setting Number: **1** ▼ * If you change this item, the screen automatically updates to the selected list.

ID List (Tenant1)**ID List**

Enter the ID name

Select

Enter the Individual ID number

Click

Apply Reset

Repeat the above settings twice for entering No. 2 and No. 3 destination IDs.

ID List (Tenant1)**ID List Entries**

Confirm

No.	Name	Call Type	Destination ID/Phone Number	Edit	Delete
1	Sales1	Individual	0001	Edit	Delete
2	Sales2	Individual	0002	Edit	Delete
3	Group call	Group	0001	Edit	Delete

Delete All

STEP 1

STEP 2

STEP 3

STEP 4

STEP 5

STEP 3: ID LIST GROUP NUMBER SETTING

Select the same ID list group number that was set in step 2, in the ID List.

Common Settings (Tenant1)

Reboot the transceiver if you change the settings on this page.

Common Setting List

No.	Wireless LAN	ID List Number	Common Message Group	
1	Transceiver's Setting	Disable	Disable	<input type="button" value="Edit"/> <input type="button" value="Delete"/>

Common Settings

No.: 1

Wireless LAN: Transceiver's Setting

Common Settings: 1

ID List: 1

Message List: Disable

Common Settings (Tenant1)

Reboot the transceiver if you change the settings on this page.

Common Setting List

No.	Wireless LAN	ID List Number	Common Message Group	
1	Transceiver's Setting	1	Disable	<input type="button" value="Edit"/> <input type="button" value="Delete"/>

For demonstration purposes, enter the same number.

Click

Click

Select the common settings number

Select

Click

Confirm



STEP 4: USE ID LIST SETTING

The setting steps are as follows.

STEP 4-1 The IP100H (TR1) settings

STEP 4-2 The IP100H (TR2) settings.

STEP 4-1 The IP100H (TR1) settings

▼ Transceiver Settings

Transceiver Status

Transceiver Registration

Transceiver Settings

Click

Transceiver Settings (Tenant1)

Reboot the transceiver if you change the settings on this page.

Unit ID:

Destination ID

Use ID List:

First Call ID:

Received Call Notification

Volume:

Action:

Function Settings

Communication Method:

Priority Call:

Area Call:

Message:

Status:

0001(Sales1) ▼

☐ Disable
 ☒ Enable

All ▼

10 ▼

Notification Beep ▼

☐ Simplex
 ☒ Full-Duplex

☒ Disable
 ☐ Enable

☒ Disable
 ☐ Enable

☒ Disable
 ☐ Enable

☒ Disable
 ☐ Enable

☒ Disable
 ☐ Enable

☒ Disable
 ☐ Enable

First Message: 1 ▼

Select

Select

Click

Apply

Reset

STEP 4-2 The IP100H (TR2) settings

Transceiver Settings (Tenant1)

Reboot the transceiver if you change the settings on this page.

Unit ID:

Destination ID

Use ID List:

First Call ID:

Received Call Notification

Volume:

Action:

Function Settings

Communication Method:

Priority Call:

Area Call:

Message:

Status:

0002(Sales2) ▼

☐ Disable
 ☒ Enable

All ▼

10 ▼

Notification Beep ▼

☐ Simplex
 ☒ Full-Duplex

☒ Disable
 ☐ Enable

☒ Disable
 ☐ Enable

☒ Disable
 ☐ Enable

☒ Disable
 ☐ Enable

☒ Disable
 ☐ Enable

☒ Disable
 ☐ Enable

First Message: 1 ▼

Select

Select

Click

Apply

Reset

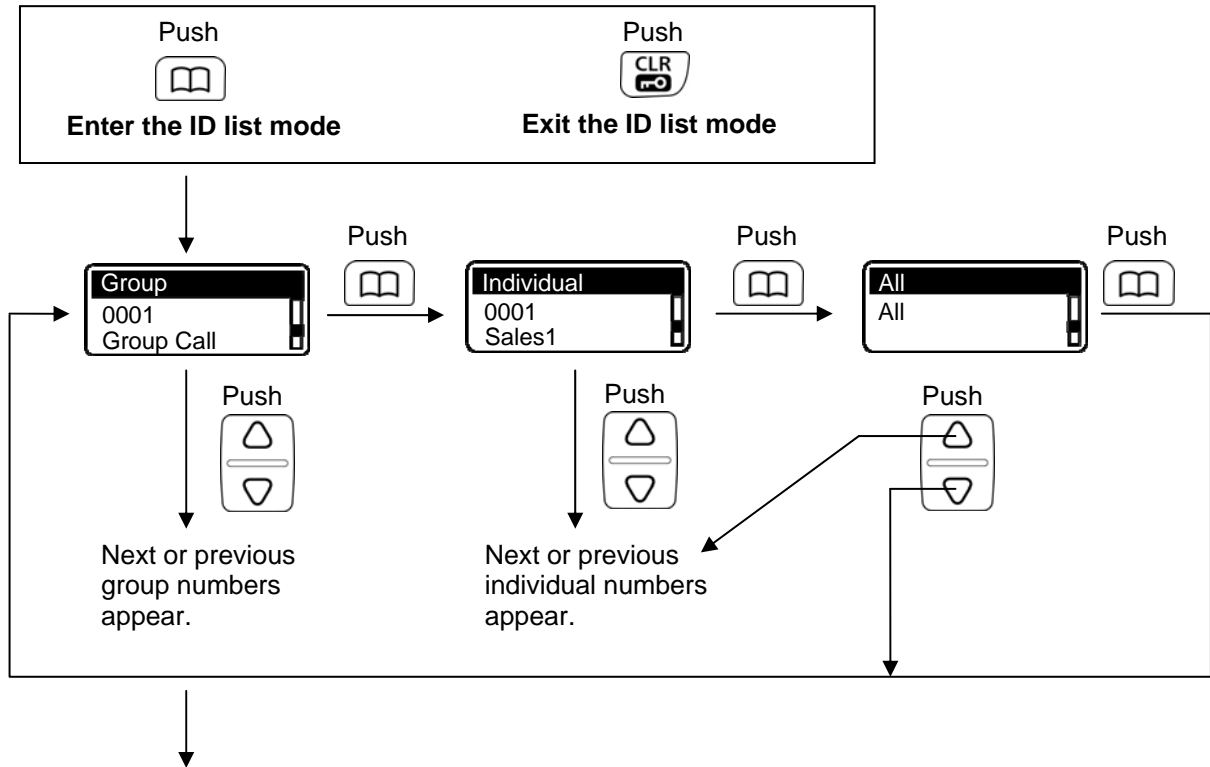
Transceiver Setting List

Transceiver Model	Name	Unit ID	Use ID List	Area Call	Message	Status	Option Key
IP100H	Sales1	0001	Enable	Disable	Disable	Disable	Disabled
IP100H	Sales2	0002	Enable	Disable	Disable	Disable	Disabled

Confirm



STEP 5: DEMONSTRATION



While holding down **[PTT]**, speak into the microphone at a normal voice level.
You can communicate with selected ID's IP100Hs.

2-4 HOW TO ENTER AND SEND A MESSAGE

BEFORE you enter a message, you must first complete the steps in 2-1 STAND ALONE NETWORK CONNECTION AND IP ADDRESS or 2-2 IP NETWORK CONNECTIONS AND SETTING EXAMPLES.

IP1000C has a message function. The message function is convenient to send messages by only pushing [PTT], without speaking.

STEP 1: GROUP ID SETTINGS (IF REQUIRED)



STEP 2: ENTER THE DESTINATION ID



STEP 3: SELECT THE MESSAGE GROUP NUMBER AND ENTER THE MESSAGE



STEP 4: SELECT THE ID AND MESSAGE LIST



STEP 5: USE ID LIST AND MESSAGE SETTING



STEP 6: DEMONSTRATION



STEP 1: GROUP ID SETTINGS (IF REQUIRED)

NOTE: If you want to use the IP ADVANCED SYSTEM to make only individual calls, skip this step and go to STEP 2.

Set the ID list group to make group calls.
Enter the group call number and select the group members into this step.

(Setting example)

- Group name: Group1
- Group number: 0001
- Group member: 0001 (Sales1), 0002 (Sales2)

Destination Settings (Tenant1)

List of Destination Setting Entries (Group Call)

No.	Name	Destination ID	Number of Transceivers	
1	Group1	0001	2	<input type="button" value="Edit"/> <input type="button" value="Delete"/>

Confirm

STEP 1

STEP 2

STEP 3

STEP 4

STEP 5

STEP 6

STEP 2: ENTER THE DESTINATION ID

Select the individual and group numbers in the ID list.

If you want to enter two or more destination IDs, repeat STEP 2.

(Setting example)

No.	Name	Call Type	Destination ID
1	Sales1	Individual	0001
2	Sales2	Individual	0002
3	Group call	Group	0001

▼ Common Settings

- Wireless LAN
- ID List**
- Messages
- Status
- Common Settings

Click

ID List (Tenant1)

Reboot the transceiver if you change the settings on this page.

ID List Common Settings

Select

ID List Common Setting Number: ▼ * If you change this item, the screen automatically updates to the selected list.

ID List (Tenant1)**ID List**

Enter the ID name

Select

No.: ▼
 Name:
 Call Type: ▼
 Destination ID:

Enter the Individual ID number

Click

Repeat the above settings twice for entering No. 2 and No. 3 destination IDs.

ID List (Tenant1)**ID List Entries**

Confirm

No.	Name	Call Type	Destination ID/Phone Number		
1	Sales1	Individual	0001	<input type="button" value="Edit"/>	<input type="button" value="Delete"/>
2	Sales2	Individual	0002	<input type="button" value="Edit"/>	<input type="button" value="Delete"/>
3	Group call	Group	0001	<input type="button" value="Edit"/>	<input type="button" value="Delete"/>
<input type="button" value="Delete All"/>					

STEP 1

STEP 2

STEP 3

STEP 4

STEP 5

STEP 6

STEP 3: SELECT THE MESSAGE GROUP NUMBER AND ENTER THE MESSAGE

You select a message group number from 1 to 100, and enter up to 10 messages.

(Setting example)

- Message Group Number: 1
- Enter messages as follow.

No.	Fixed Message
1	Good morning
2	Thank you
3	Good bye
4	Hello!
5	Hot
6	Cold

▼ Common Settings

Wireless LAN

ID List

Messages

Status

Common Settings

Click

Messages (Tenant1)

Reboot the transceiver if you change the settings on this page.

Message Group

Message Group Number: * If you change this item, the screen automatically updates to the selected list.

Select the Message Group number

Messages

No.	Fixed Message
1	Good morning
2	Thank you
3	Good bye
4	Hello!
5	Hot
6	Cold
7	
8	
9	
10	

Apply

Reset

Enter the messages using PC's keyboard

Click

STEP 1

STEP 2

STEP 3

STEP 4

STEP 5

STEP 6

STEP 4: SELECT THE ID AND MESSAGE LIST

Select the same ID and Message Lists number that was set in steps 2 and 3.

ID List (Tenant1)

Reboot the transceiver if you change the settings on this page.

ID List Common Settings

ID List Common Setting Number: 1 If you change this item, the screen automatically updates to the selected list.

Messages (Tenant1)

Reboot the transceiver if you change the settings on this page.

Message Group

Message Group Number: 1 * If you change this item, the screen automatically updates to the selected list.

Common Settings (Tenant1)

Reboot the transceiver if you change the settings on this page.

Common Setting List

No.	Wireless LAN	ID List Number	Common Message Group	
1	Transceiver's Setting	Disable	Disable	Edit Delete

Delete All

Common Settings

No.: 1

Wireless LAN: Transceiver's Setting

Common Settings:

ID List: 1

Message List: 1

Apply Reset

Common Settings (Tenant1)

Reboot the transceiver if you change the settings on this page.

Common Setting List

No.	Wireless LAN	ID List Number	Common Message Group	
1	Transceiver's Setting	1	1	Edit Delete

For demonstration purposes, enter the same number.

Click

Click

Select the common settings number

Select

Select

Click

Confirm



STEP 5: USE ID LIST AND MESSAGE SETTING

The setting steps are as follows.
STEP 5-1 The IP100H (TR1) settings
STEP 5-2 The IP100H (TR2) settings.

STEP 5-1 The IP100H (TR1) settings

▼ Transceiver Settings

Transceiver Status

Transceiver Registration

Transceiver Settings

Click

Transceiver Settings (Tenant1)

Reboot the transceiver if you change the settings on this page.

Transceiver Settings

Unit ID:
Destination ID

0001(Sales1)

Select

Use ID List:
First Call ID:

Disable

Enable

All

Select

Received Call Notification

Volume:
Action:

10

Notification Beep

Function Settings

Communication Method:
Priority Call:
Area Call:
Message:
Status:

Simplex

Full-Duplex

Disable

Enable

Disable

Enable

Disable

Enable

Disable

Enable

First Message: 1

Select

Apply

Reset

Click

STEP 5-2 The IP100H (TR2) settings

Transceiver Settings (Tenant1)

Reboot the transceiver if you change the settings on this page.

Transceiver Settings

Unit ID:
Destination ID

0002(Sales2)

Select

Use ID List:
First Call ID:

Disable

Enable

All

Select

Received Call Notification

Volume:
Action:

10

Notification Beep

Function Settings

Communication Method:
Priority Call:
Area Call:
Message:
Status:

Simplex

Full-Duplex

Disable

Enable

Disable

Enable

Disable

Enable

Disable

Enable

First Message: 1

Select

Apply

Reset

Click

Transceiver Setting List

Transceiver Model	Name	Unit ID	Use ID List	Area Call	Message	Status	Option Key
IP100H	Sales1	0001	Enable	Disable	Enable	Disable	Disabled
IP100H	Sales2	0002	Enable	Disable	Enable	Disable	Disabled

Confirm

STEP 1

STEP 2

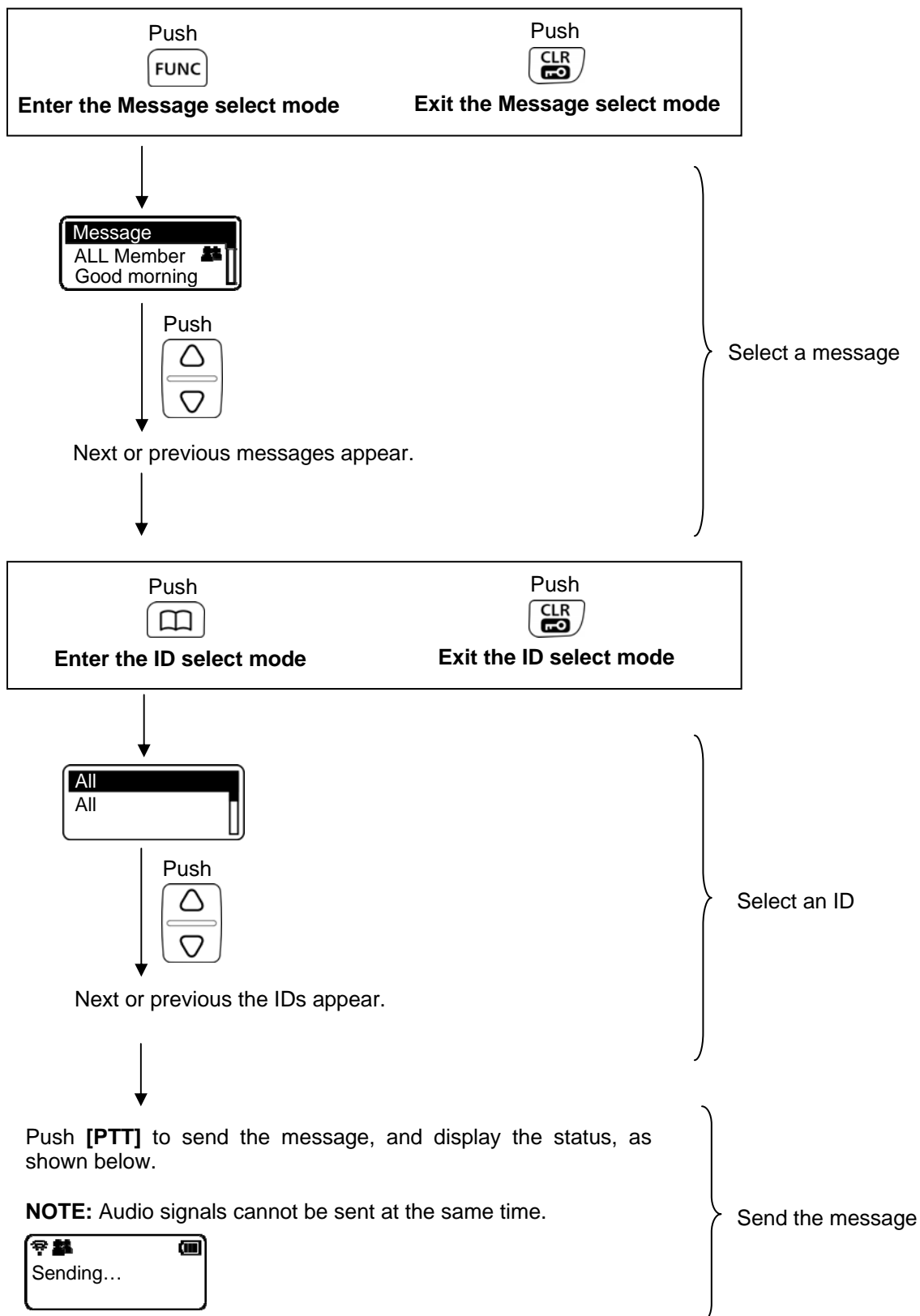
STEP 3

STEP 4

STEP 5

STEP 6

STEP 6: DEMONSTRATION



2-5 HOW TO SET AND USE THE IP100FS

Set an access point, PC, IP1000C, IP100H, and IP100FS using the following steps.

IMPORTANT! We recommend that you connect the access point, IP1000C and PC in a standalone configuration. If you connect them to your local network with the following connection settings, your local network may not operate correctly. (IP addresses may overlap.)

STEP 1: CONNECTION EXAMPLE



STEP 2: ACCESS POINT SETTINGS



STEP 3: IP1000C SETTINGS



STEP 4: IP100H SETTINGS



STEP 5: IP100FS SETTINGS

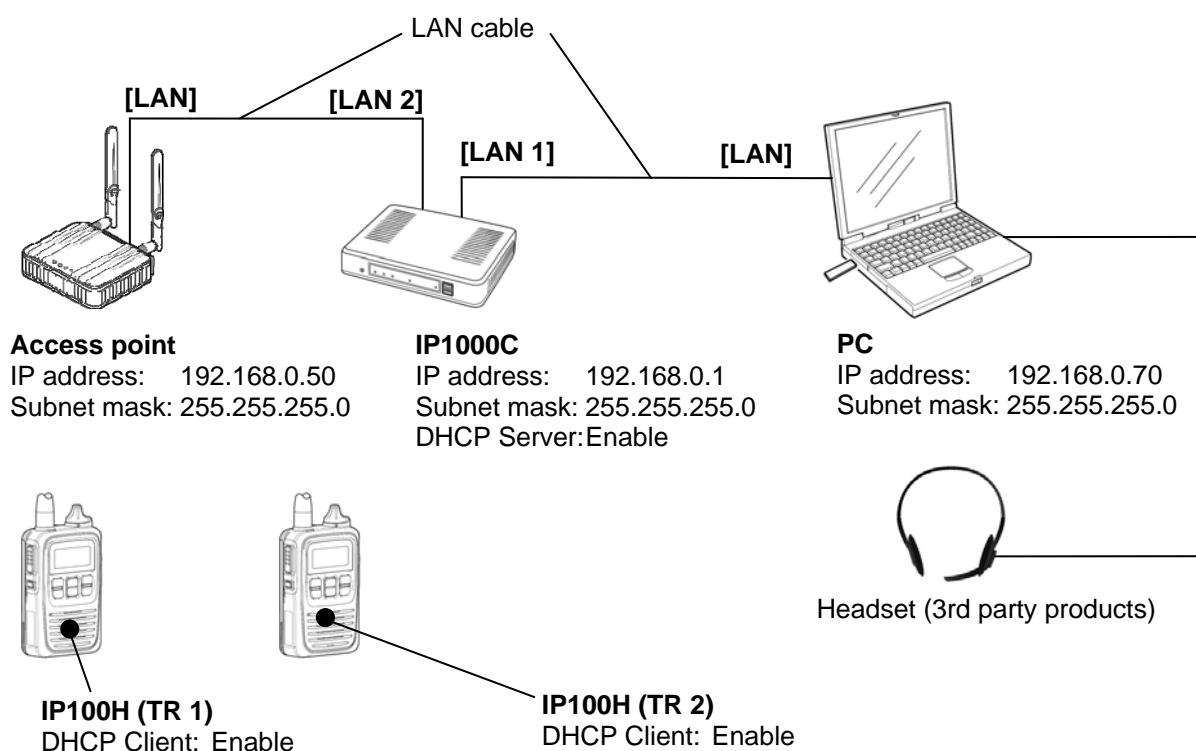


STEP 6: DEMONSTRATION



STEP 1: CONNECTION EXAMPLE

See each equipment's instruction manual for connecting and setting details.





STEP 2: ACCESS POINT SETTINGS

Set your access point's **IP address** to **192.168.0.50**, and **SSID** to **WAVEMASTER-0**.

IMPORTANT! If you turn ON the Hide SSID function when using IEEE802.11a, IP100H may not connect to the access point.

[RECOMMENDATION]

We recommend that you set the access point's authentication as follows:

For example:

- Authentication: WPA-PSK-WPA2-PSK
- Encryption Type: TKIP-AES
- PSK: 5cf97dgh6



STEP 3: IP1000C SETTINGS

The setting steps are as follows.

STEP 3-1 The DHCP Server settings

STEP 3-2 Common settings

STEP 3-3 Area Call settings

STEP 3-4 The IP100H (TR 1) settings

STEP 3-5 The IP100H (TR 2) settings

STEP 3-6 The IP100FS settings

STEP 3-7 Group ID settings (If required)

STEP 3-8 Enter the destination ID

STEP 3-9 Select the message group number and enter the message

STEP 3-10 Select the message list

STEP 3-11 Use ID list and message setting

STEP 3-1 The DHCP Server settings

The screenshot shows the DHCP Server settings interface. A red box highlights the 'DHCP Server' option in the 'Network Settings' menu, with a red arrow pointing to a 'Click' label. Below this, the 'DHCP Server' settings are shown. A red arrow points to the 'Enable' radio button, with a 'Select' label. Another red arrow points to the 'Apply' button, with a 'Click' label. A large white arrow points down to the 'DHCP Server' header. At the bottom, a red box highlights the 'Reboot' button, with a red arrow pointing to a 'Click' label. A note next to the 'Reboot' button states: 'A reboot is required to apply all the new settings.'

STEP 3-2 Common settings

▼ Common Settings

- Wireless LAN
- ID List
- Messages
- Status
- Common Settings**

Click

Common Settings (Tenant1)

Common Settings

No.: 1 ▼

Wireless LAN: Transceiver's Setting ▼

Common Settings: Disable ▼

ID List: Disable ▼

Message List: Disable ▼

Apply Reset

Click

Common Settings (Tenant1)

Common Setting List

No.	Wireless LAN	ID List Number	Common Message Group	Edit	Delete
1	Transceiver's Setting	Disable	Disable		

Delete All

Confirm

STEP 3-3 Area Call settings

▼ RoIP Server Settings

- Bridge
- Area Call**

Click

Area Call (Tenant1)

Area Setting

No.: 1 ▼

Name: Area1

BSSID

BSSID	Name	BSSID	Name

Apply Reset

Click

Enter Area name

Enter the Access Point's BSSID

[Confirm the Area name and BSSID settings]

Area Call (Tenant1)

Area Entry List

No.	Name	BSSID	Edit	Delete
1	Area1			

Confirm

STEP 3-4 The IP100H (TR 1) settings

▼ Transceiver Settings

Transceiver Status

Transceiver Registration

Transceiver Settings

Click

Transceiver Registration (Tenant1)

Reboot the transceiver if you change the settings on this page.

Transceiver Settings

TRX No.:
Transceiver Model:
Name:
Unit ID:

1

IP100H

Sales1

0001

Security

Password:

iptrx

Connection Port

Transceiver Port Number:
Server Port Number:

30000

30000

Common Settings

Group:

1

Apply

Reset

Click

Enter

STEP 3-5 The IP100H (TR 2) settings

Transceiver Registration (Tenant1)

Reboot the transceiver if you change the settings on this page.

Transceiver Settings

TRX No.:
Transceiver Model:
Name:
Unit ID:

2

IP100H

Sales2

0002

Security

Password:

iptrx

Connection Port

Transceiver Port Number:
Server Port Number:

30002

30002

Common Settings

Group:

1

Apply

Reset

Click

Enter

[Confirm the IP100H (TR 1 and TR 2) settings]

Transceiver Setting Entry List

TRX No.	Transceiver Model	Name	Unit ID	Connection Port		Group		
				Transceiver	Server			
1	IP100H	Sales1	0001	30000	30000	1	Edit	Delete
2	IP100H	Sales2	0002	30002	30002	1	Edit	Delete

Confirm

STEP 3-6 The IP100FS settings

▼ Transceiver Settings

Transceiver Status

Transceiver Registration

Transceiver Settings

Click

Transceiver Registration (Tenant1)

Reboot the transceiver if you change the settings on this page.

Transceiver Settings

TRX No.: 3

Transceiver Model: IP100FS

Name: Office

Unit ID: 0003

Security Password: iptrx

Connection Port Server Port Number: 30004

Common Settings Group: 1

Select

Enter

Click

Apply

Reset

[Confirm the IP100H (TR 1 and TR 2) and IP100FS settings]

Transceiver Setting Entry List

TRX No.	Transceiver Model	Name	Unit ID	Connection Port		Group		
				Transceiver	Server			
1	IP100H	Sales1	0001	30000	30000	1	Edit	Delete
2	IP100H	Sales2	0002	30002	30002	1	Edit	Delete
3	IP100FS	Office	0003	-	30004	1	Edit	Delete

Confirm

STEP 3-7 Group ID settings (If required)

NOTE: If you want to use the IP ADVANCED SYSTEM to make only individual calls, skip this step.

Set the ID list group to make group calls.

Enter the group call number and select the group members into this step.

(Setting example)

- Group name: Group1
- Group number: 0001
- Group member: 0001 (Sales1), 0002 (Sales2)

Destination Settings

Destination Settings (Tenant1)

Destination Setting

No.: 1

Name: Group1

Call Type: Group

Destination ID: 0001

Destination Group

Communication Type: ☐ Simplex ☒ Full-Duplex

Transceiver Selection

☒ 0001(Sales1) ☒ 0002(Sales2)

Apply Reset

Destination Settings (Tenant1)

List of Destination Setting Entries (Group Call)

No.	Name	Destination ID	Number of Transceivers	
1	Group1	0001	2	Edit Delete

Confirm

STEP 3-8 Enter the destination ID

Select the individual and group numbers in the ID list.
If you want to enter two or more destination IDs, repeat STEP 2.

(Setting example)

No.	Name	Call Type	Destination ID
1	Sales1	Individual	0001
2	Sales2	Individual	0002
3	Group call	Group	0001

▼ Common Settings

- Wireless LAN
- ID List**
- Messages
- Status
- Common Settings

Click

ID List (Tenant1)

Reboot the transceiver if you change the settings on this page.

ID List Common Settings

Select

ID List Common Setting Number: * If you change this item, the screen automatically updates to the selected list.

ID List (Tenant1)

ID List

Enter the ID name

Select

Enter the Individual ID number

Click

Apply Reset

Repeat the above settings twice for entering No. 2 and No. 3 destination IDs.

ID List (Tenant1)

ID List Entries

Confirm

No.	Name	Call Type	Destination ID/Phone Number	Edit	Delete
1	Sales1	Individual	0001	Edit	Delete
2	Sales2	Individual	0002	Edit	Delete
3	Group call	Group	0001	Edit	Delete

Delete All

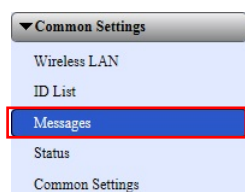
STEP 3-9 Select the message group number and enter the message

You select a message group number from 1 to 100, and enter up to 10 messages.

(Setting example)

- Message Group Number: 1
- Enter messages as follow.

No.	Fixed Message
1	Good morning
2	Thank you
3	Good bye
4	Hello!
5	Hot
6	Cold



Click

Messages (Tenant1)

Reboot the transceiver if you change the settings on this page.

Message Group

Message Group Number: * If you change this item, the screen automatically updates to the selected list.

Select the Message Group number

Messages

No.	Fixed Message
1	Good morning
2	Thank you
3	Good bye
4	Hello!
5	Hot
6	Cold
7	
8	
9	
10	

Enter the messages using PC's keyboard

Click

Apply Reset

STEP 3-10 Select the ID and message lists

Select the same ID and Message Lists number that was set in 3-8 and 3-9.

ID List (Tenant1)

Reboot the transceiver if you change the settings on this page.

ID List Common Settings

ID List Common Setting Number: If you change this item, the screen automatically updates to the selected list.

Messages (Tenant1)

Reboot the transceiver if you change the settings on this page.

Message Group

Message Group Number: * If you change this item, the screen automatically updates to the selected list.

For demonstration purposes, enter the same number.

Common Settings (Tenant1)

Reboot the transceiver if you change the settings on this page.

Common Setting List

No.	Wireless LAN	ID List Number	Common Message Group	
1	Transceiver's Setting	Disable	Disable	<input type="button" value="Edit"/> <input type="button" value="Delete"/>

Common Settings

No.:

Wireless LAN:

Common Settings

ID List:

Message List:

Common Settings (Tenant1)

Reboot the transceiver if you change the settings on this page.

Common Setting List

No.	Wireless LAN	ID List Number	Common Message Group	
1	Transceiver's Setting	1	1	<input type="button" value="Edit"/> <input type="button" value="Delete"/>

STEP 3-11 Use ID and message setting

The setting steps are as follows.

STEP 3-11-1 The IP100H (TR1) settings

STEP 3-11-2 The IP100H (TR2) settings.

STEP 3-11-1 The IP100H (TR1) settings

▼ Transceiver Settings

Transceiver Status

Transceiver Registration

Transceiver Settings

Click

Transceiver Settings (Tenant1)

Reboot the transceiver if you change the settings on this page.

Transceiver Settings

Unit ID: 0001(Sales1) Select

Destination ID

Use ID List: ☐ Disable ☒ Enable Select

First Call ID: All Select

Received Call Notification

Volume: 10 Select

Action: Notification Beep

Function Settings

Communication Method: ☐ Simplex ☒ Full-Duplex Select

Priority Call: ☒ Disable ☐ Enable Select

Area Call: ☐ Disable ☒ Enable Select

Message: ☐ Disable ☒ Enable First Message: 1 Select

Status: ☒ Disable ☐ Enable Select

Apply Reset

Click

STEP 3-11-2 The IP100H (TR2) settings

Transceiver Settings (Tenant1)

Reboot the transceiver if you change the settings on this page.

Transceiver Settings

Unit ID: 0002(Sales2) Select

Destination ID

Use ID List: ☐ Disable ☒ Enable Select

First Call ID: All Select

Received Call Notification

Volume: 10 Select

Action: Notification Beep

Function Settings

Communication Method: ☐ Simplex ☒ Full-Duplex Select

Priority Call: ☒ Disable ☐ Enable Select

Area Call: ☐ Disable ☒ Enable Select

Message: ☐ Disable ☒ Enable First Message: 1 Select

Status: ☒ Disable ☐ Enable Select

Apply Reset

Click

Transceiver Setting List

Transceiver Model	Name	Unit ID	Use ID List	Area Call	Message	Status	Option Key
IP100H	Sales1	0001	Enable	Disable	Enable	Disable	Disabled
IP100H	Sales2	0002	Enable	Disable	Enable	Disable	Disabled

Confirm

STEP 1

STEP 2

STEP 3

STEP 4

STEP 5

STEP 6

STEP 4: IP100H SETTINGS (A CS-IP100H is necessary to set up the IP100H)

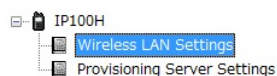
BEFORE you use a CS-IP100H, following procedures are required. See the CS-IP100H and OPC-478UC instruction manuals for setting and installing details.

- Install the CS-IP100H (Cloning software)
- Install the OPC-478UC (Cloning cable)'s USB driver
- Connect the OPC-478UC and the IP100H
- Run the CS-IP100H

The setting steps are as follows:

STEP 4-1 TR 1 settings

STEP 4-2 TR 2 settings

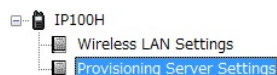
STEP 4-1 TR 1 settings

Wireless LAN Settings	
Encryption	
SSID	WAVEMASTER-0
Authentication	WPA-PSK/WPA2-PSK
Encryption Type	TKIP/AES
PSK	*****

Enter the same SSID as the access point

Select

Enter the same PSK as the access point
(Enter "5cf97dgh6" here)



Provisioning Server Settings	
IP Address	192.168.0.1
TRX No.	1
Password	*****

IP1000C's setting screen

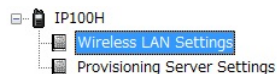
Network Settings	
IP Address	192.168.0.1
DHCP Server	255.255.255.0
Static Routing	

Transceiver Settings	
Transceiver Status	
Transceiver Registration	
Transceiver Settings	

Reboot the transceiver if you change the settings on this page.

Transceiver Registration (Tenant1)	
TRX No.:	1
Transceiver Model:	IP100H
Name:	Sales1
Unit ID:	0001
Security	
Password:	lptrx

STEP 4-2 TR 2 settings

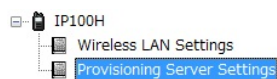


Wireless LAN Settings	
Encryption	
SSID	WAVEMASTER-0
Authentication	WPA-PSK/WPA2-PSK
Encryption Type	TKIP/AES
PSK	*****

Enter the same SSID as the access point

Select

Enter the same PSK as the access point
(Enter "5cf97dgh6" here)



Provisioning Server Settings	
Provisioning Server Settings	
IP Address	192.168.0.1
TRX No.	2
Password	*****

IP1000C's setting screen

▼ Network Settings

IP Address

DHCP Server

Static Routing

IP Address

IP Address

Subnet Mask

192.168.0.1

255.255.255.0

▼ Transceiver Settings

Transceiver Status

Transceiver Registration

Transceiver Settings

Transceiver Registration (Tenant1)

Reboot the transceiver if you change the settings on this page.

Transceiver Settings

TRX No.:

Transceiver Model:

Name:

Unit ID:

Security

Password:

2

IP100H

Sales2

0002

iptrx



STEP 5: IP100FS SETTINGS

IMPORTANT! Set the IP100FS's Windows® Firewall to permit before using IP100FS.

The setting steps are as follows.

STEP 5-1 Login to the IP100FS

STEP 5-2 IP100FS settings

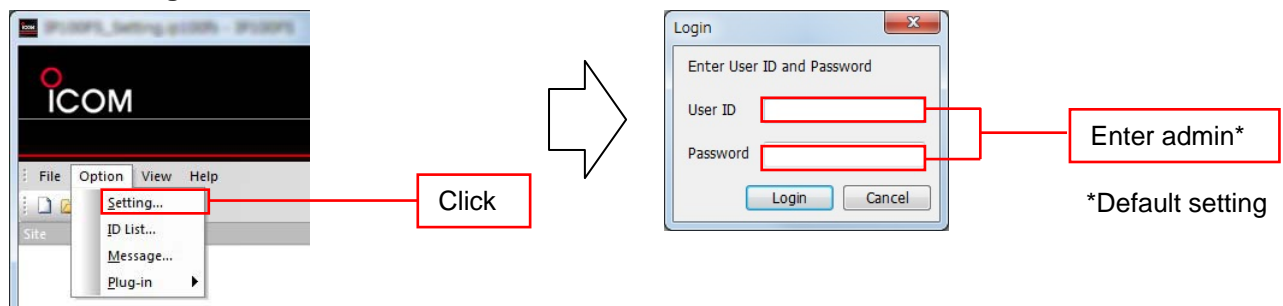
STEP 5-3 Adding an access point icon

STEP 5-4 ID list setting

STEP 5-5 Message setting

STEP 5-6 One-touch button setting

STEP 5-1 Login the IP100FS



STEP 5-2 IP100FS settings

Settings

Common Settings Site 1 Site 2 Site 3

Site Button

Show

Name

Office

Unit Setting

Tenant ID 1

Unit ID 0003

Password iptrx

Source Port 30004

Destination Address 192.168.0.1

Destination Port 30004

Registration Time(Sec) 60

TalkBack Timer(Sec) 5

TalkBack Lock Enable

Volume -36

OK Cancel

IP1000C's screen

Tenant Settings

Tenant Settings

Tenant

Tenant Number: 1

Tenant Name: Tenant1

Transceiver Settings

Transceiver Status

Transceiver Registration

Transceiver Settings

Transceiver Registration (Tenant1)

Reboot the transceiver if you change the settings on this page.

Transceiver Settings

TRX No.: 3

Transceiver Model: IP100FS

Name: Office

Unit ID: 0003

Security

Password: iptrx

Connection Port

Server Port Number: 30004

Common Settings

Group: 1

Apply Reset

Network Settings

IP Address

DHCP Server

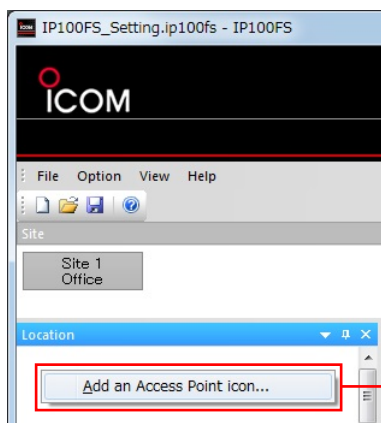
Static Routing

IP Address

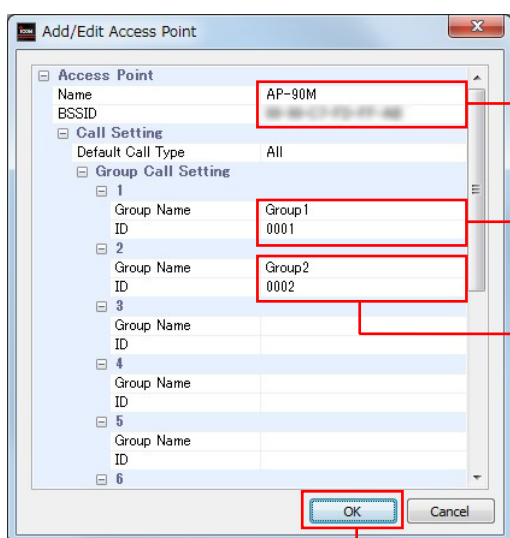
IP Address: 192.168.0.1

Subnet Mask: 255.255.255.0

STEP 5-3 Adding an access point icon in location window



Right-click, and select

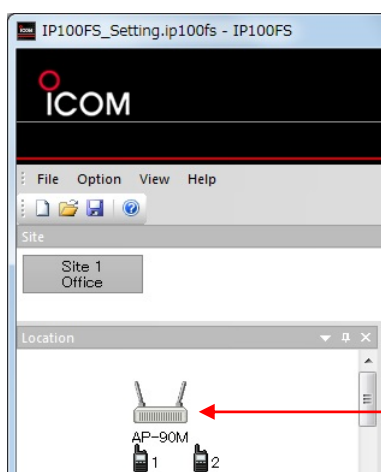


Enter the access point's name and BSSID

Enter (If necessary)

Enter (If necessary)

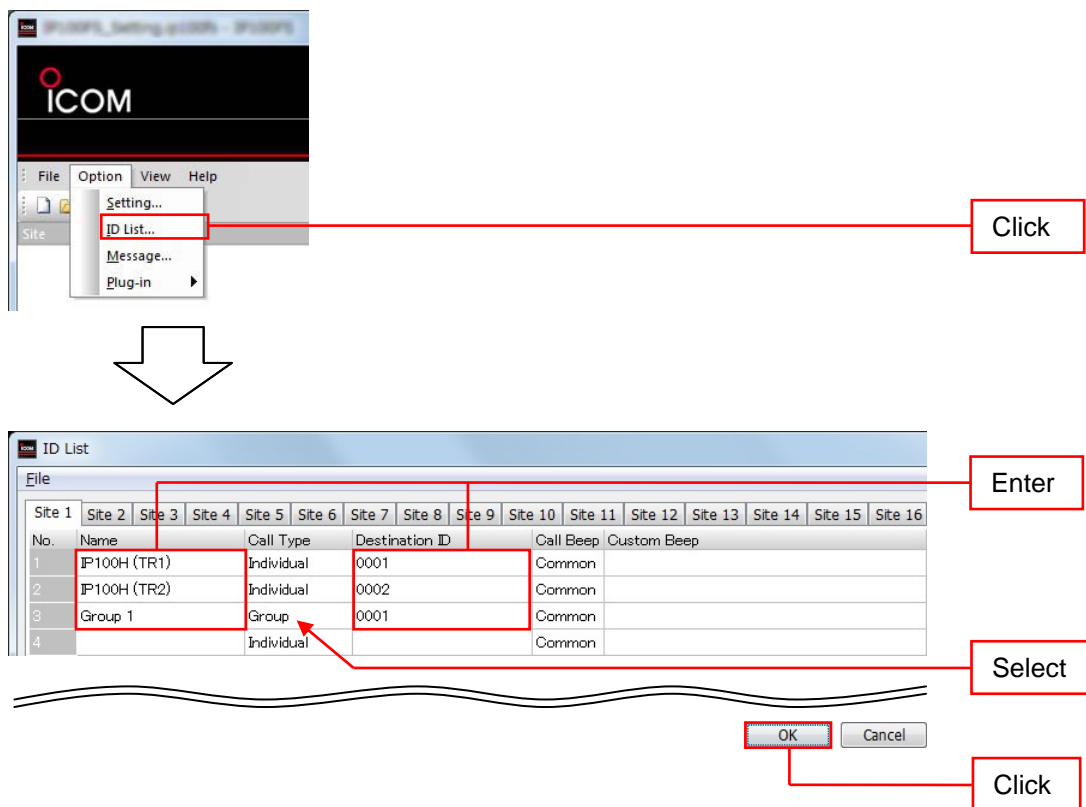
Click



The added Access Point appears

The connected IP100Hs appear

STEP 5-4 ID list setting



Click

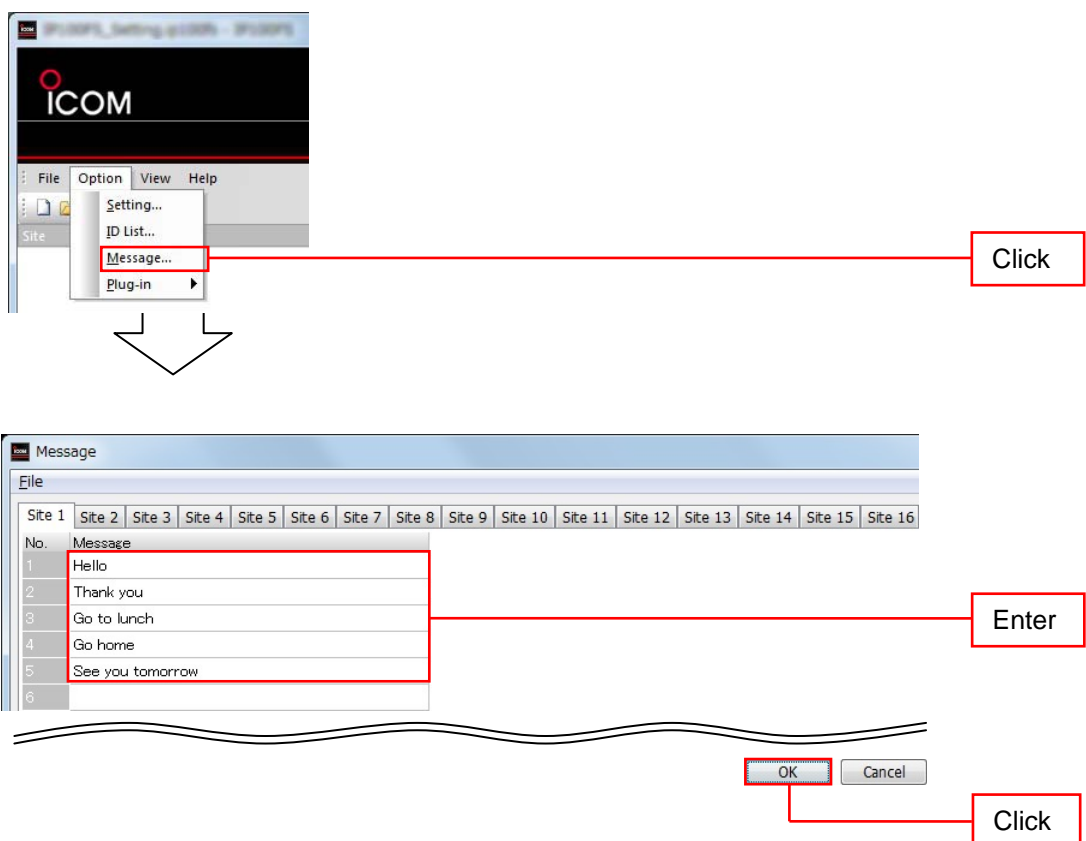
Enter

Select

Click

No.	Name	Call Type	Destination ID	Call Beep	Custom Beep
1	JP100H (TR1)	Individual	0001	Common	
2	JP100H (TR2)	Individual	0002	Common	
3	Group 1	Group	0001	Common	
4		Individual		Common	

STEP 5-5 Message setting



Click

Enter

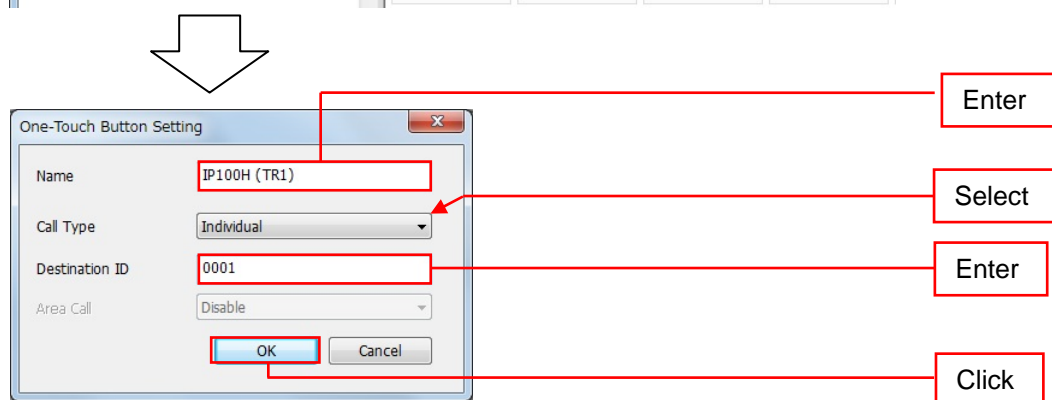
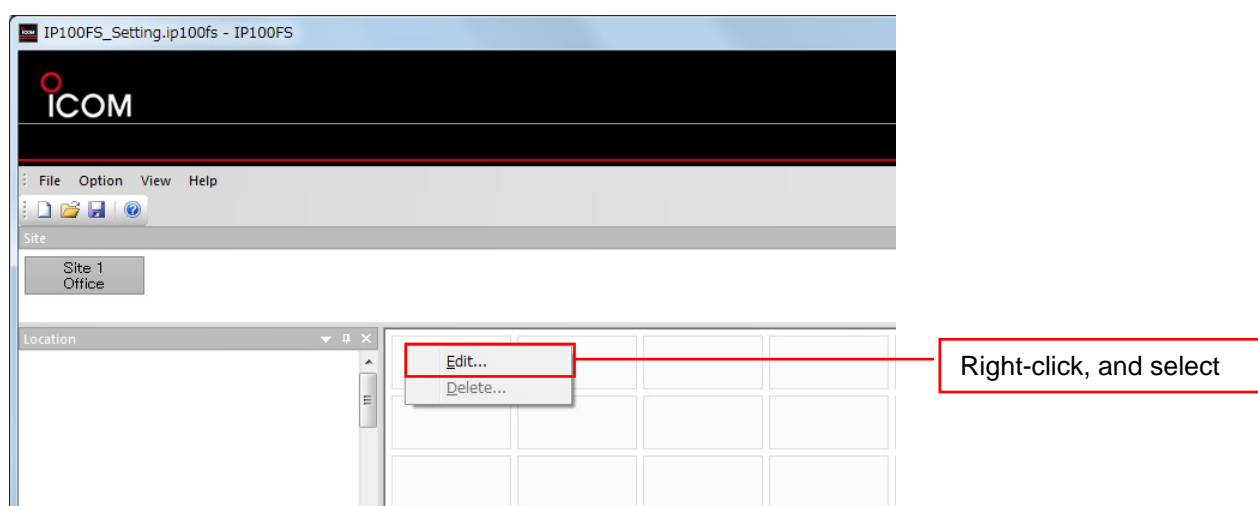
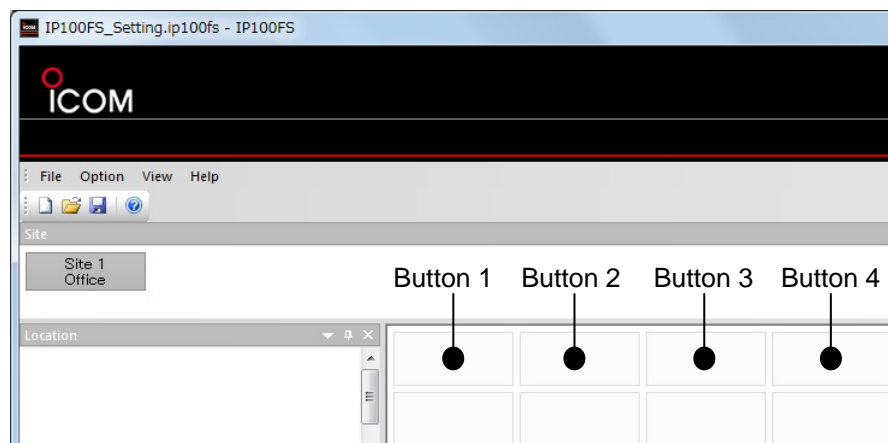
Click

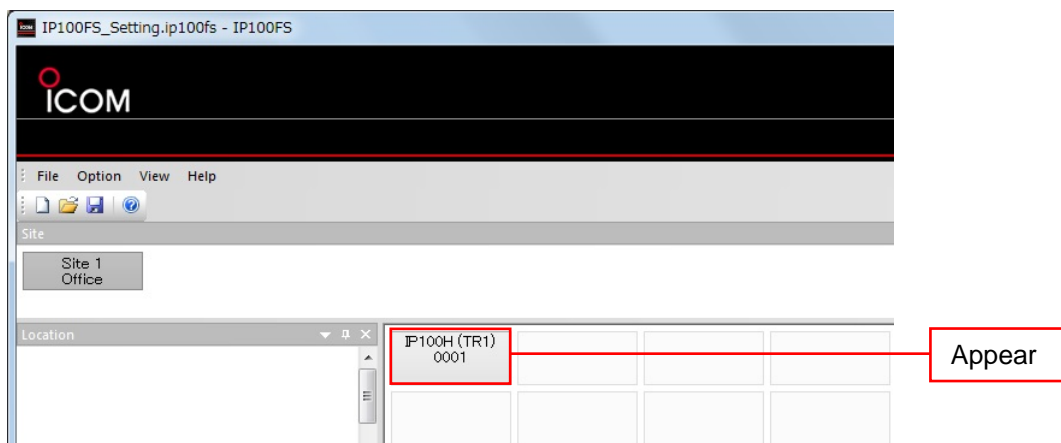
No.	Message
1	Hello
2	Thank you
3	Go to lunch
4	Go home
5	See you tomorrow
6	

STEP 5-6 One-touch button setting

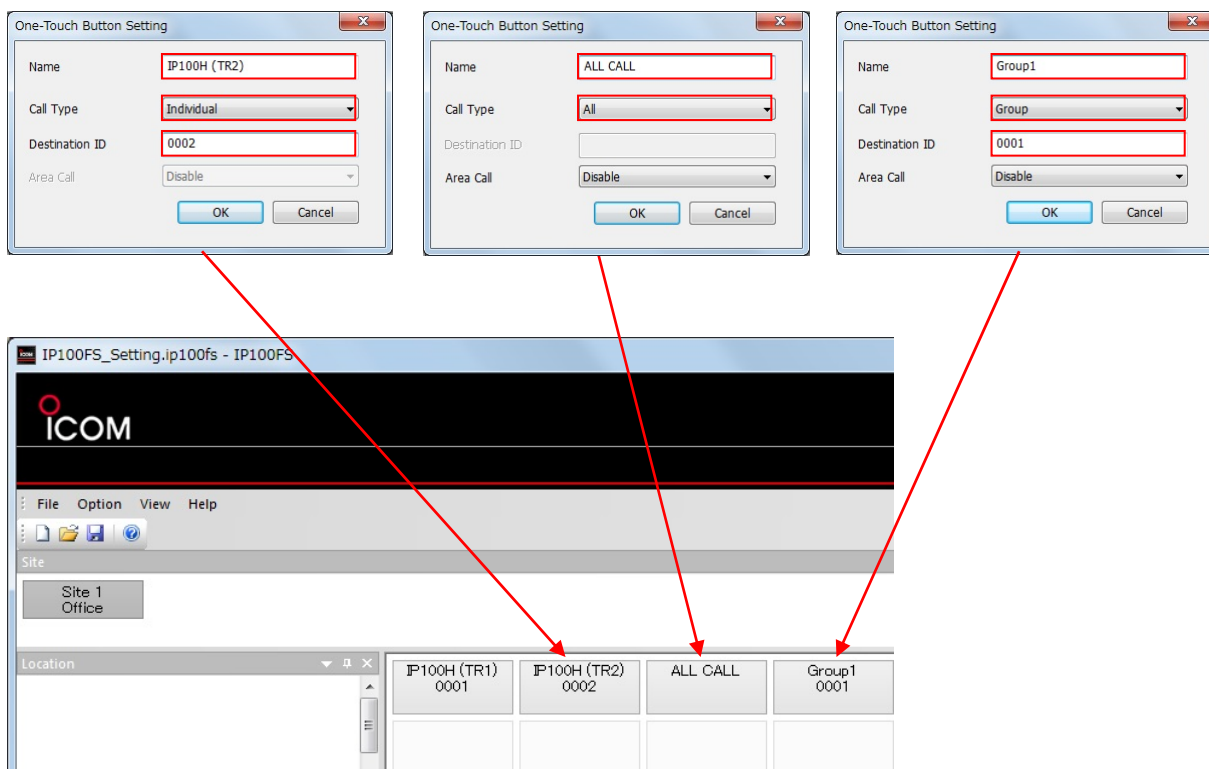
Enter the following setting to each buttons.

One-touch button	Button 1	Button 2	Button 3	Button 4
Name	IP100H (TR1)	IP100H (TR2)	ALL CALL	Group 1
Call Type	Individual	Individual	All	Group
Destination ID	0001	0002		0001





Repeat same one-touch button settings for Button 2, Button 3 and Button 4.



STEP 1

STEP 2

STEP 3

STEP 4

STEP 5

STEP 6

STEP 6: DEMONSTRATION

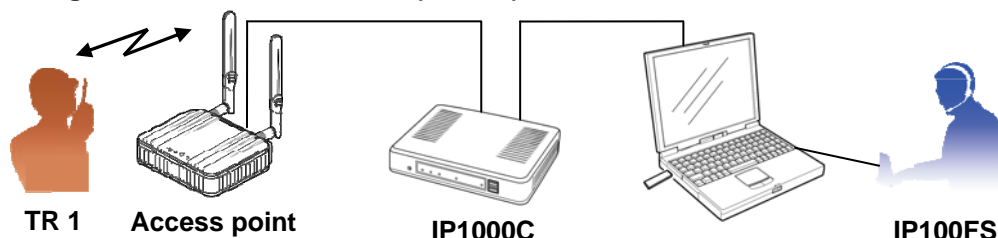
STEP 6-1 TALKING TO AN IP100H USER

STEP 6-2 SEND A MESSAGE TO AN IP100H USER

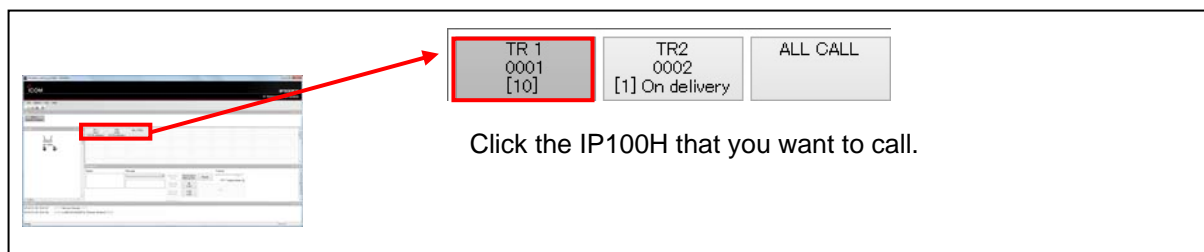
STEP 6-3 USING THE LOCATION WINDOW

STEP 6-1 TALKING TO AN IP100H USER

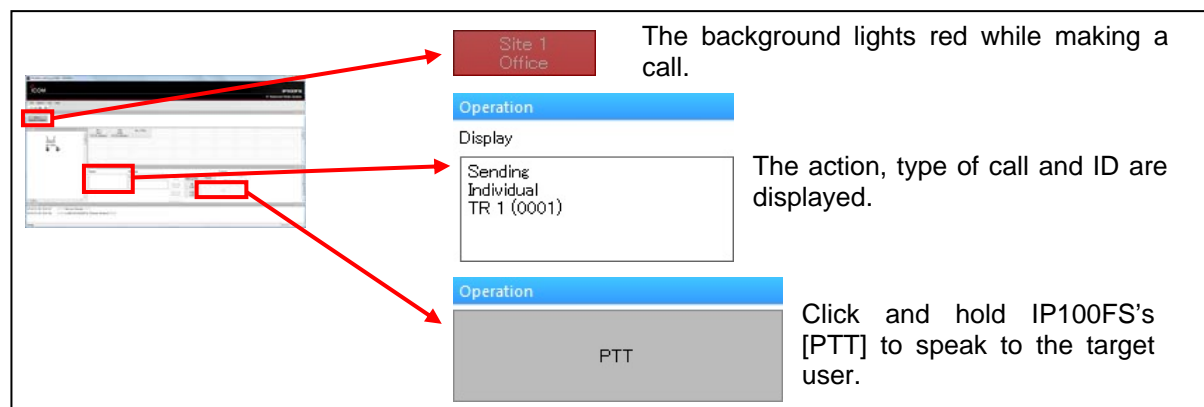
When calling from the IP100FS to TR 1 (IP100H)



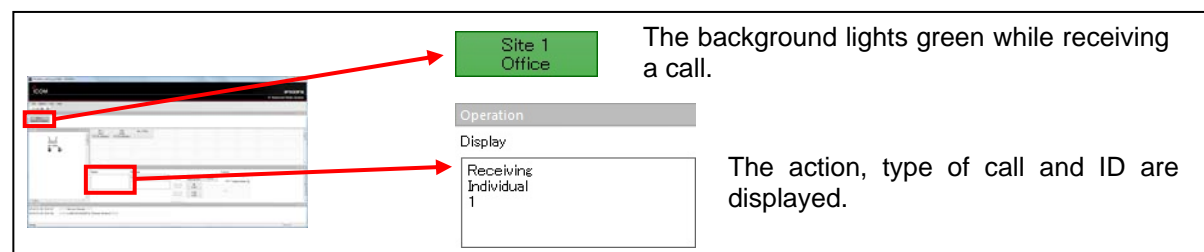
- (1) Turn ON TR 1's power, and start up the IP100FS.
- (2) Click [TR1] on the IP100FS to select the IP100H that you want to call.



- (3) Click and hold IP100FS's [PTT], and then speak into the microphone at a normal voice level. The IP100FS displays the following screen, and your voice is heard from TR 1's speaker. After speaking, release IP100FS's [PTT] to listen.

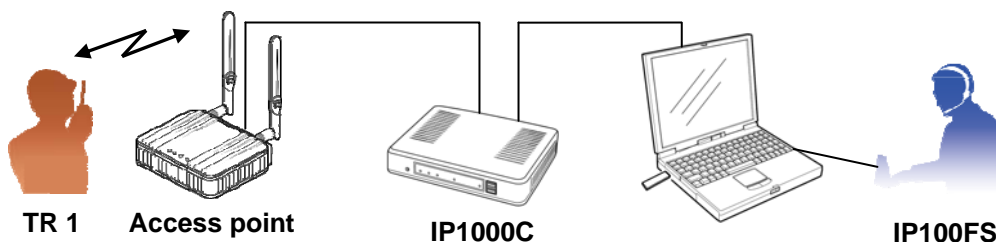


- (4) Hold down TR 1 (IP100H)'s [PTT], and then speak into the microphone at a normal voice level. The IP100FS displays the following screen, and then your voice is heard from the headset via through IP100FS.

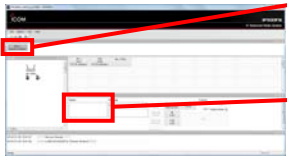


After speaking, release TR 1's [PTT].

When calling from TR 1 (IP100H) to the IP100FS



- (1) Turn ON TR 1's power (IP100H), and start up the IP100FS.
- (2) Push to select the IP100FS's ID.
While pushing and holding TR 1's **[PTT]**, speak into the microphone at a normal voice level.
The IP100FS displays the following screen, and then your voice is heard from the headset through the IP100FS.



Site 1
Office

Operation

Display

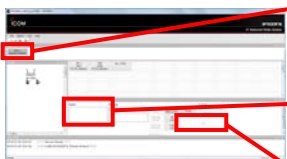
Receiving
Individual
1

The background lights green while receiving a call.

The action, type of call and ID are displayed.

After speaking, release TR 1's **[PTT]**.

- (3) While clicking and holding the IP100FS's **[PTT]**, speak into the microphone at a normal voice level.
The IP100FS displays the following screen, and then your voice is heard from TR 1's speaker.
After speaking, release IP100FS's **[PTT]**.



Site 1
Office

Operation

Display

Sending
Individual
TR 1 (0001)

PTT

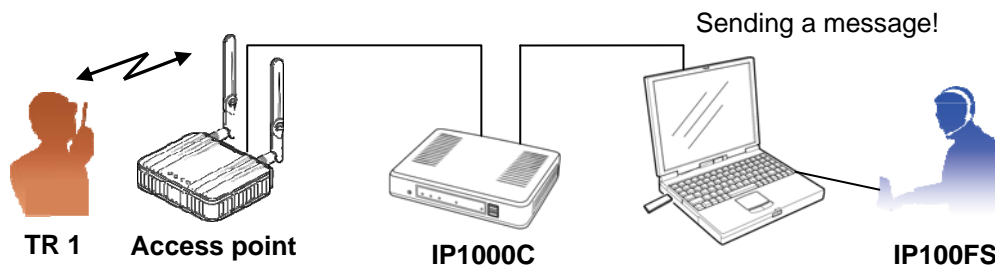
The background lights red while making a call.

The action, type of call and ID are displayed.

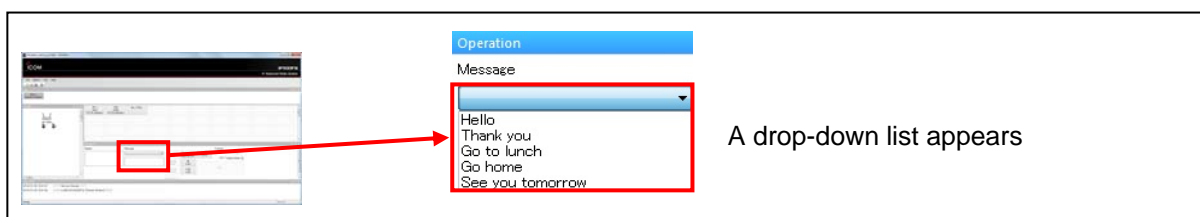
Click and hold IP100FS's **[PTT]** to speak to the target users.

STEP 6-2 SEND A MESSAGE TO THE IP100H OPERATOR

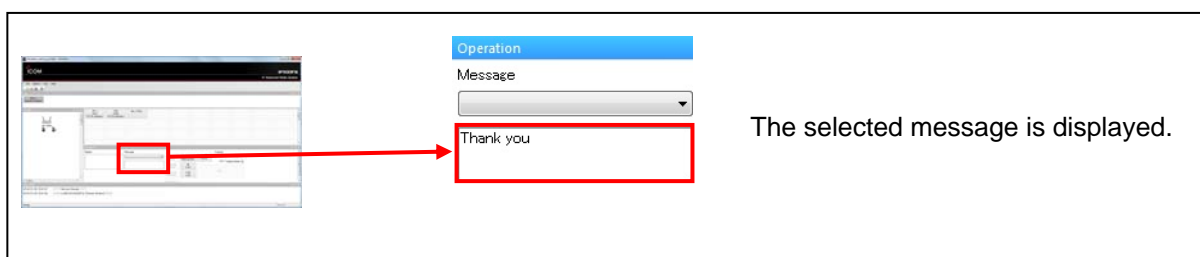
When sending a message from an IP100FS to a TR 1 (IP100H)



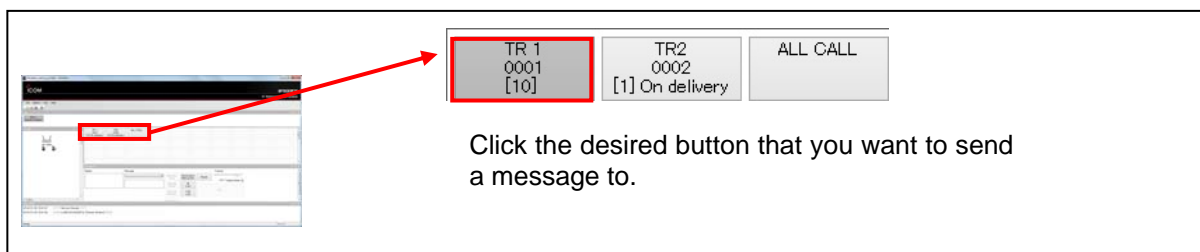
- (1) Turn ON TR 1's power (IP100H), and start up the IP100FS.
- (2) Click the message combo box, and then a drop-down list appears.



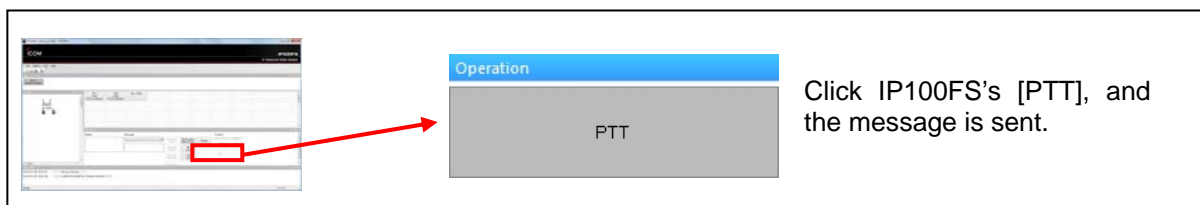
- (3) Select the desired message from the list.



- (4) Click [TR1] on the IP100FS to select the desired IP100H that you want to send a message to.

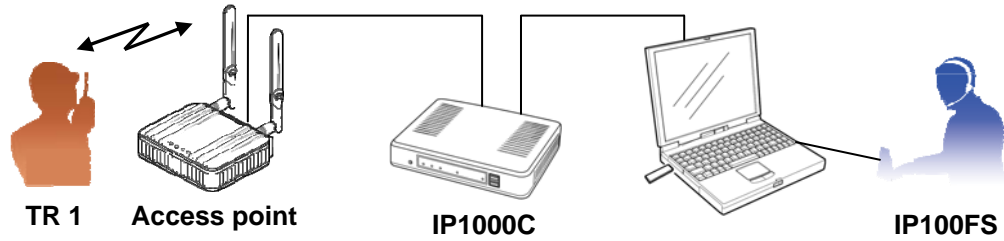


- (5) Click IP100FS's [PTT] to send the message.

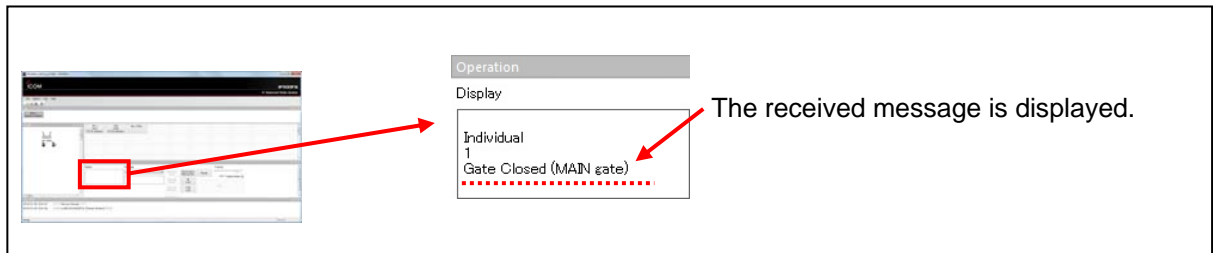


When sending a message from a TR 1 (IP100H) to an IP100FS

Sending a message!



- (1) Turn ON TR 1's power, and start up the IP100FS.
 - (2) Push **FUNC** to enter the message select mode, and then select a desired message.
 - (3) Push **PTT** to send the selected message to the IP100FS.
- Push TR1's **[PTT]** to send the selected message to the IP100FS
The IP100FS displays the message, as shown below.



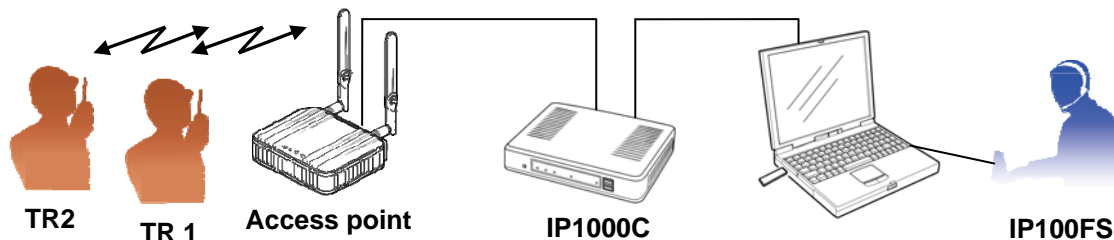
After sending, release TR1's **[PTT]**.

STEP 6-3 USING THE LOCATION WINDOW

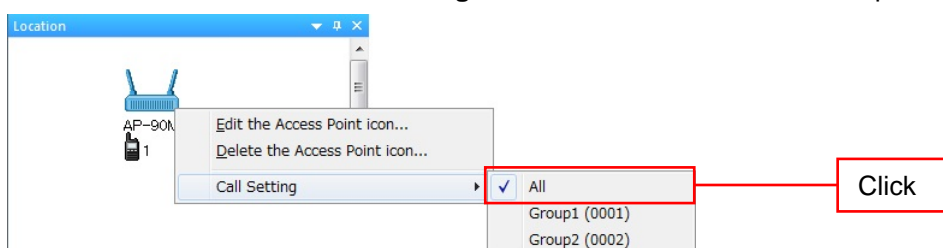
When area calling from the IP100FS to an access point (All Call)

What is Area Calling?

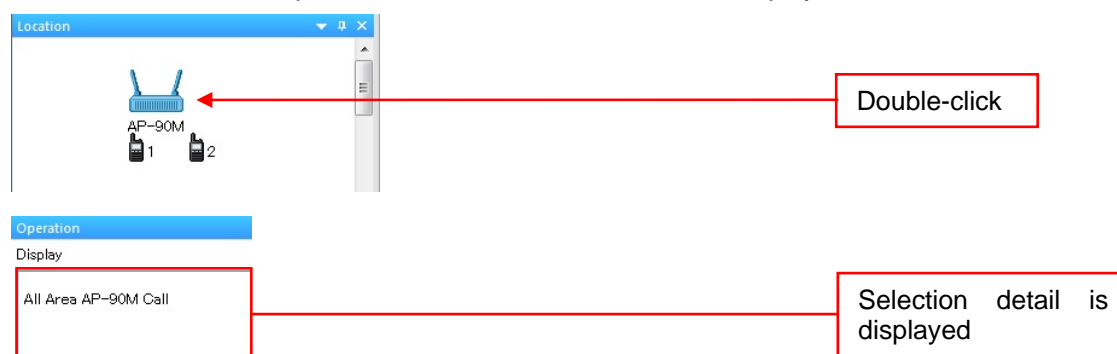
If two or more access points are used on an IP network, you can communicate to only IP100Hs that are connected to a specified access point, by using the Area Calling function.



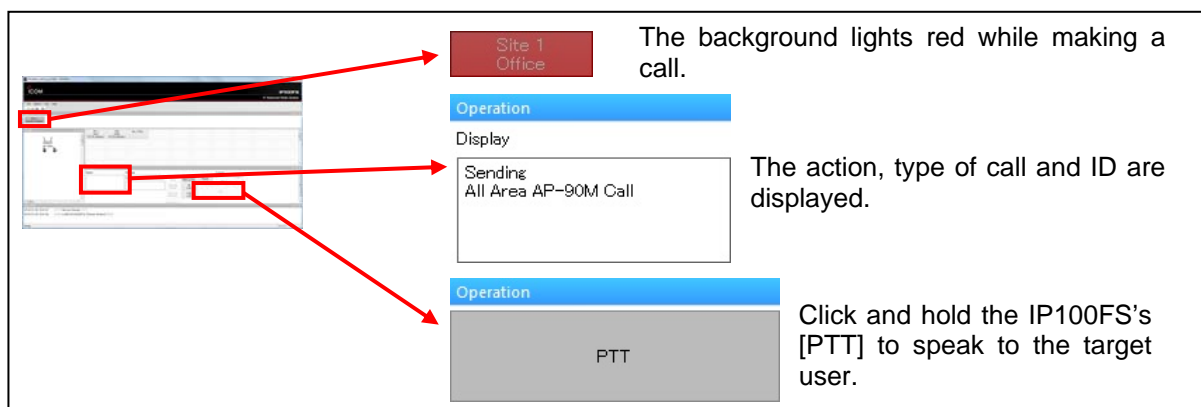
- (1) Right click on the access point icon, and then a drop down menu appears.
- (2) Move the mouse cursor to **Call Setting**, and then click **All** on the next drop down menu.



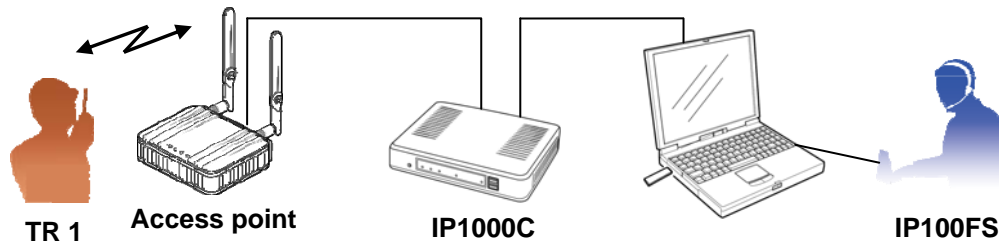
- (3) Double-click the access point, and then the selection detail is displayed on the IP100FS screen.



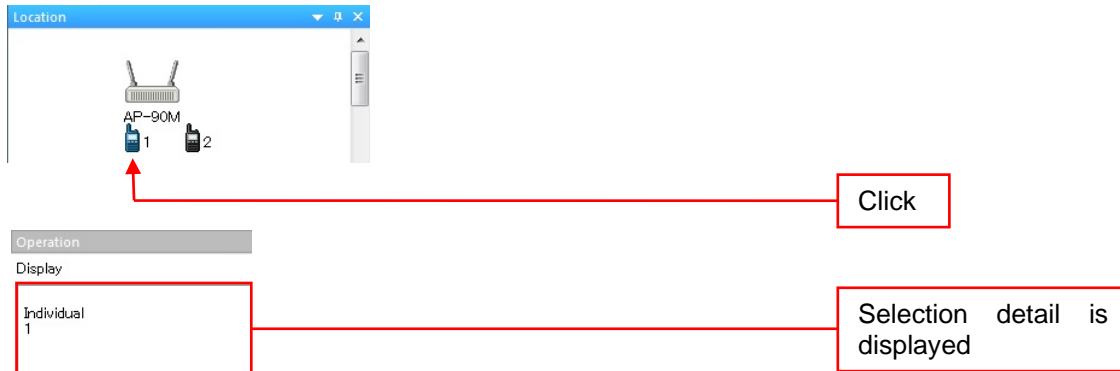
- (4) Click and hold IP100FS's **[PTT]**, and then speak into the microphone at a normal voice level. The IP100FS displays the following screen, and your voice is heard from TR 1 and TR 2's speaker. After speaking, release IP100FS's **[PTT]** to listen.



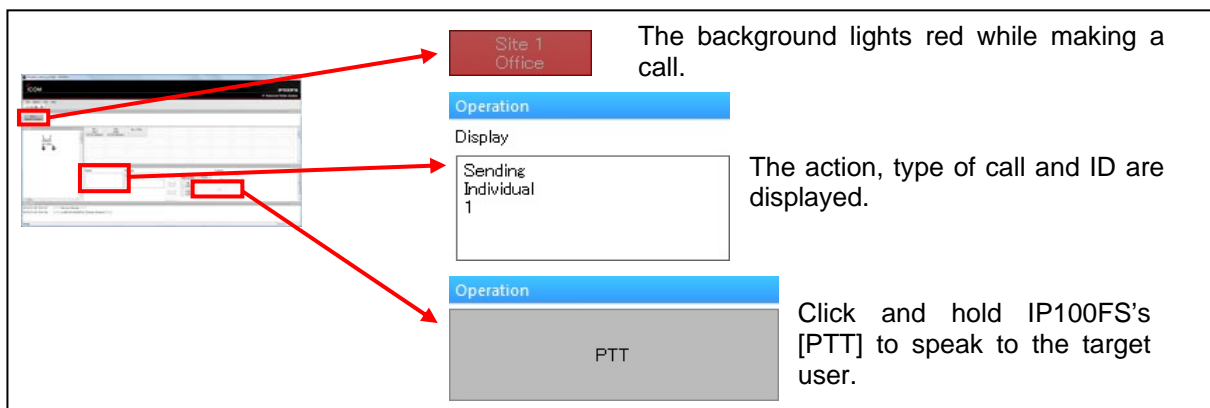
When calling from the IP100FS to a specified IP100H (Individual Call)




- (1) Click the IP100H (TR 1) icon, and then the selection detail is displayed on the IP100FS screen.



- (2) Click and hold IP100FS's **[PTT]**, and then speak into the microphone at a normal voice level. The IP100FS displays the following screen, and your voice is heard from TR 1's speaker. After speaking, release IP100FS's **[PTT]** to listen.



SECTION 3 Q & A

CATEGORY	QUESTION	ANSWER
IP100H	If the IP100H is out of the service range, and is locked by the IP100FS, does the IP100H remain locked when it enters the range again?	The remote control lock is only activated when the IP100H is online. If you want to lock the IP100H when it enters the range again, delete the IP100H registration from the IP1000C.
	Is there any alarm function to indicate when the IP100H goes out of range?	The IP100H has no alarm function, and the  icon blinks
	Can the IP100H switch between the simplex mode and the full duplex mode?	No. The IP100H cannot switch between the simplex and full duplex modes. When you connect the headset to the IP100H, you can operate in the full duplex mode.
	How can you read a message that is too long to display on one line?	Scroll the message from right to left.
	How does the IP100H switch to a different access point (roaming)?	The IP100H automatically switches to a different access point by checking the signal strength level. You can set the threshold of the signal strength to switch.
	The IP100H automatically downloads firmware updates from the IP1000C when you turn ON the IP100H's power. If the IP100H's power is turned OFF while the download is in progress, what happens?	The IP100H keeps an internal firmware copy. Therefore, the IP100H is turned ON using the previous firmware. However, sometimes after an interruption, the IP100H may not work properly.
	It takes about 38 seconds to be the usable condition after you turn ON the IP100H. Is it normal?	It takes a certain amount of time to set data, download address, and other processes; therefore the waiting time is necessary.
	Is it possible to operate full-duplex without a headset?	No, you cannot use full-duplex without a headset.
	Is it possible to increase the IP100H output power?	You cannot increase the IP100H output power.
	What is necessary to expand the communication coverage area?	Simply add more access points to expand the communication coverage area.
IP100FS	Can the dispatcher immediately see when a user turns a terminal ON or OFF?	The IP100H can be used about 40 seconds after turning it on. This is a system specification. The IP100H needs that time to collect information from the IP1000C controller, set data and other processes.

CATEGORY	QUESTION	ANSWER
System	What is difference between an area and a site?	An area is the communication coverage area of a single access point. A Site is where the IP1000C and the connected access points are physically located.
	Are there any regulation problems in making telephone calls through an IP100H?	Check with your local regulations before considering using the system for telephone calls.
	Up to 100 sets of the IP100H can connect to a IP1000C. However, if you have 120 sets of IP100H, and you turn OFF 20 of them, can we use the remaining 100 IP100Hs?	IP100H's number must be registered. Therefore, more than 100 IP100Hs cannot be registered.
	If 10 people try to talk at the same time, can their communication be heard and understood?	The voice audio may be garbled. This differs depending on several factors. Up to 4 persons can talk at the same time.
	Is it possible to have detailed log information for security purposes? (Example: Transceiver / Access time / Access point information)	Not at this time.
	How do you upgrade the controller from a 20 transceiver system to a 100 transceivers system?	At this time you cannot use the setting data of the IP1000C 20 transceiver version to configure the 100 transceiver version. The format is different.
	How do you recover the system if the IP1000C controller breaks down?	You can exchange the controller with one of the same version, and then install the original setting data from a backup that you made on a USB flash drive. NOTE: There is no compatibility between 20 transceiver version and 100 transceiver version setting data.
	Is it possible to operate the IP Advanced Radio system in a public Wi-Fi network?	If you are a public Wi-Fi network provider and you want to use the system in your network, you can install the IP1000C in the network. In such a case, if you do, we strongly recommend that you use different SSID to separate the public Wi-Fi and the IP Advanced Radio system in the network. NOTE: The IP Advanced Radio system is not designed to be used in a public Wi-Fi network. Therefore, we don't recommend you to use the system in a public Wi-Fi network.

CATEGORY	QUESTION	ANSWER
Wireless LAN	Is there any problem or function limitation when using 3rd party access points, rather than Icom access points?	Almost any access point can be used. But, we recommend you to use Icom's access point.
	How can we know when the number of IP100Hs simultaneously used exceeds the maximum limit?	Simultaneously communicating on 12 IP100H is the maximum number recommended. The audio quality from the speaker may be decreased. Icom's access point can set a limitation on the number of terminals that can connect to the system by setting the CAC (Call Admission Control) function to help limit decreased audio quality.
	Can we use an IEEE802.11N access point?	Yes, you can use IEEE802.11N access points. You can also use IEEE802.11A/G; 11B/G/N for 2.4GHz and 11A/N for 5 GHz.
Access point	Is there a problem using only one SSID?	It is better to have an exclusive SSID for the IP Advanced Radio system. Current WLAN access points have a multi-SSID function so you should consider an exclusive SSID for the IP Advanced Radio System. If the network for an IP Advanced Radio system and WLAN for guests is separated by different SSID, the separated network is more secure.
	How many access points can connect to a site system?	If the access points are set in one area, the maximum number of access points depends on the Wi-Fi channel interference in the area. If the cell and network design is well organized, you can basically connect as many access points as you need.

Icom America Inc.

12421 Willows Road NE,
Kirkland, WA 98034, U.S.A.
Phone : +1 (425) 454-8155
Fax : +1 (425) 454-1509
E-mail : sales@icomamerica.com
URL : <http://www.icomamerica.com>

Icom Canada

Glenwood Centre #150-6165 Highway 17,
Delta, B.C., V4K 5B8, Canada
Phone : +1 (604) 952-4266
Fax : +1 (604) 952-0090
E-mail : info@icomcanada.com
URL : <http://www.icomcanada.com>

Icom Brazil

Rua Itororó, 444 Padre Eustáquio
Belo Horizonte MG,
CEP: 30130-150, Brazil
Phone : +55 (31) 3582 8847
Fax : +55 (31) 3582 8987
E-mail : sales@icombrasil.com

Icom (Europe) GmbH

Communication Equipment
Auf der Krautweide 24
65812 Bad Soden am Taunus, Germany
Phone : +49 (6196) 76685-0
Fax : +49 (6196) 76685-50
E-mail : info@icom-europe.com
URL : <http://www.icom-europe.com>

Icom Spain S.L.

Ctra. Rubí, No. 88 "Edificio Can Castanyer"
Bajos A 08174, Sant Cugat del Valles,
Barcelona, Spain
Phone : +34 (93) 590 26 70
Fax : +34 (93) 589 04 46
E-mail : icom@icomspain.com
URL : <http://www.icomspain.com>

Icom Polska Sp. Z o.o.

80-286 Gdansk, Jaskowa Dolina St. 75, Poland
Phone : +48 (58) 551 0484
Fax : +48 (58) 551 4720
E-mail : icompolska@icompolska.com.pl
URL : <http://www.icompolska.com.pl>

Icom (UK) Ltd.

Blacksole House, Altira Park,
Herne Bay, Kent, CT6 6GZ, U.K.
Phone : +44 (0) 1227 741741
Fax : +44 (0) 1227 741742
E-mail : info@icomuk.co.uk
URL : <http://www.icomuk.co.uk>

Icom France s.a.s.

Zac de la Plaine,
1 Rue Brindejont des Moulinais, BP 45804,
31505 Toulouse Cedex 5, France
Phone : +33 (5) 61 36 03 03
Fax : +33 (5) 61 36 03 00
E-mail : icom@icom-france.com
URL : <http://www.icom-france.com>

Icom (Australia) Pty. Ltd.

Unit 1 / 103 Garden Road,
Clayton, VIC 3168 Australia
Phone : +61 (03) 9549 7500
Fax : +61 (03) 9549 7505
E-mail : sales@icom.net.au
URL : <http://www.icom.net.au>

Icom New Zealand

146A Harris Road, East Tamaki,
Auckland, New Zealand
Phone : +64 (09) 274 4062
Fax : +64 (09) 274 4708
E-mail : inquiries@icom.co.nz
URL : <http://www.icom.co.nz>

Asia Icom Inc.

6F No.68, Sec. 1 Cheng-Teh Road,
Taipei, Taiwan, R.O.C.
Phone : +886 (02) 2559 1899
Fax : +886 (02) 2559 1874
E-mail : sales@asia-icom.com
URL : <http://www.asia-icom.com>

Shanghai Icom Ltd.

No.101, Building 9, Caifuxingyuan Park,
No.188 Maoting Road, Chedun Town,
Songjiang District, Shanghai, 201611, China
Phone : +86 (021) 6153 2788
Fax : +86 (021) 5765 9987
E-mail : bjicom@bjicom.com
URL : <http://www.bjicom.com>

Your local distributor/dealer:
