

You can set up an Icom network device using a PC, by connecting it to the [CONSOLE] port of the network device through a USB cable.

Read this installation guide and install the USB driver to your PC, before connecting the USB cable.

This guide describes based on the following conditions:

- You have already downloaded the latest USB driver from the Icom Download Service website.
<https://www.icomjapan.com/support/>
- The Icom network device that you want to set up has a [CONSOLE] port.

TABLE OF CONTENTS

1. OVERVIEW.....	1	4. FOR YOUR REFERENCE.....	6
System requirements.....	1	4-1 Terminal software setting.....	6
2. PRECAUTIONS.....	2	4-2 COM Port setting.....	7
Before the installation.....	2	4-3 Uninstalling the driver.....	8
Before connecting to a PC.....	2	For Windows 11/Windows 10.....	8
After the installation.....	2	For Windows 8.1.....	9
3. INSTALLING THE DRIVER.....	3		
For Windows 11/Windows 10.....	3		
For Windows 8.1.....	4		

1. OVERVIEW

(As of November 2022)

System requirements

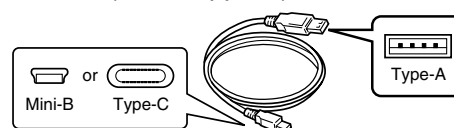
The following hardware and software are required:

PC

- Microsoft Windows 11 (64 bit)
- Microsoft Windows 10 (32/64 bit)
- Microsoft Windows 8.1 (32/64 bit)
- ① Except for Windows on ARM, such as Windows RT.
- ① The installation steps or displayed dialog may differ, depending on the operating system.
- A USB 1.1, 2.0, or 3.0 port

Cable

- A USB cable (User supplied)



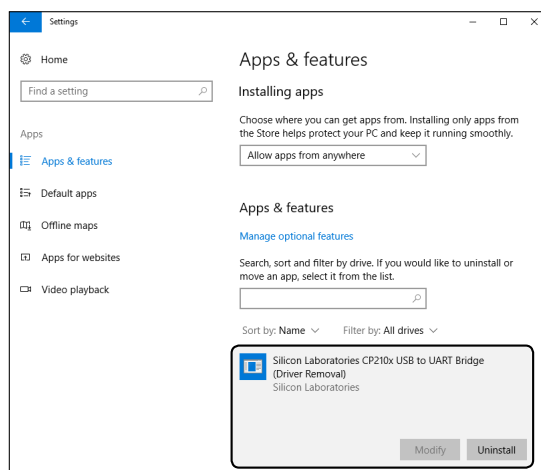
NOTE:

- Depending on the length of a third-party USB cable, the network device may not work correctly even if the PC recognizes it. Use a cable as short as possible.
- Depending on the network device, the [CONSOLE] port shape may differ. Purchase a proper USB cable. This document uses our product equipped with a Type-C [CONSOLE] port as an example.

2. PRECAUTIONS

Before the installation

- When installing the software, confirm Windows has completed its startup, and then sign in as an administrator.
- Confirm no other application is running.
- If an earlier version “Windows Driver Package - Silicon Laboratories Inc. (silabser) Ports” is installed, manually uninstall it before installing the latest driver.
See “UNINSTALLING THE DRIVER” on page 8–9 for details.



Before connecting to a PC

- The USB driver does not support the automatic recognition system. **NEVER** connect the USB cable between the network device and the PC until AFTER the USB driver has been installed. See “INSTALLING THE DRIVER” on page 3–4 for details.
Once the driver has been installed, a PC software can be used by just connecting the USB cable.
- Directly connect the network device and the PC. Icom is not responsible for improper operation when connecting them through a USB hub.

After the installation

- **Uninstalling the USB driver**
You cannot uninstall the USB driver for individual device. After uninstalling the USB driver, none of the devices that require this driver can be recognized by the PC.
- **When another network device is connected**
A COM port number is automatically added after turning ON the device.

3. INSTALLING THE DRIVER

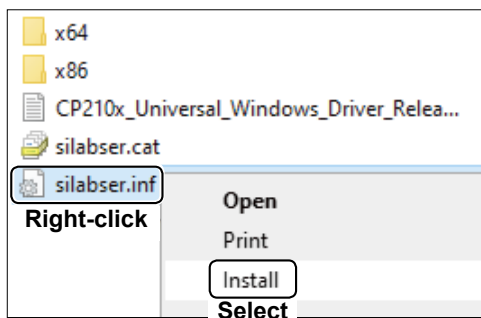
For Windows 11/Windows 10

NOTE:

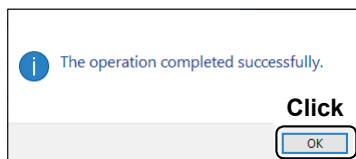
- **NEVER** connect the USB cable between the network device and the PC until the USB driver has been installed. Disconnect the cable, if connected, before starting the USB driver installation.
- This USB driver does not support the automatic recognition system.

- ① The displayed dialog, indications, or operations may differ slightly from the following instructions, depending on your system version and settings.
- ① The following steps are based on Windows 10.

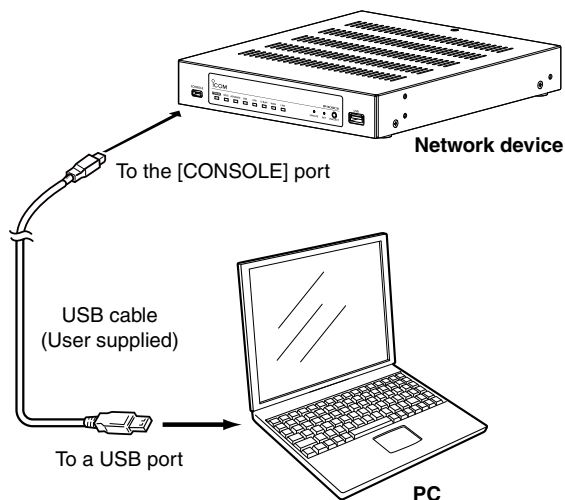
1. Confirm that the network device and PC are not connected, and no other application is running.
2. Extract the downloaded USB driver, and then open the folder that contains the installer.
3. Right-click “silabser.inf” in the “WIN10_11” folder and select “Install” from the context menu.
① For Windows 11, right-click the INF file and select “Show more options” to display “Install” menu item.



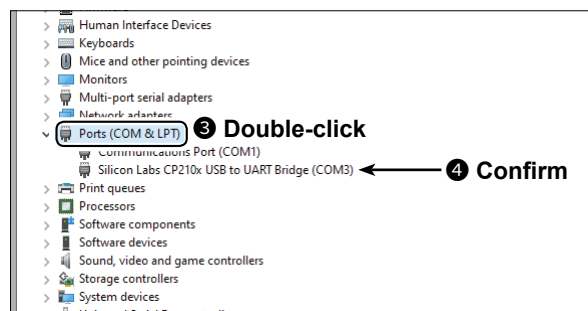
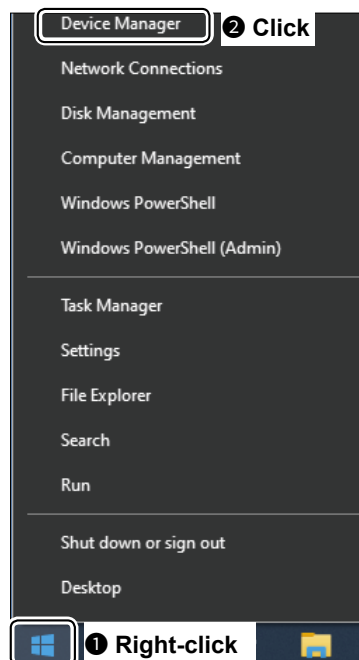
4. When the “User Account Control” dialog is displayed, click <Yes>.
5. When the dialog shown below is displayed, click <OK>.
① Depending on the computer you are using, the dialog may not be displayed. Proceed to step 6.



6. Connect the USB cable between the network device and the PC, as shown below. Then, turn ON the device.



7. Follow the steps shown below to confirm in “Device Manager” that the USB driver has been successfully installed.



- When the driver is completely installed, “Silicon Labs CP210x USB to UART Bridge (COM*)” is displayed. The screen shows the USB serial COM port number “3.”
 - The COM port number may differ, depending on the PC environment.
 - If “!” or “x” is displayed on the “Device Manager” screen, the driver may not be properly installed. In such a case, first uninstall the USB driver, then reinstall it.

3. INSTALLING THE DRIVER

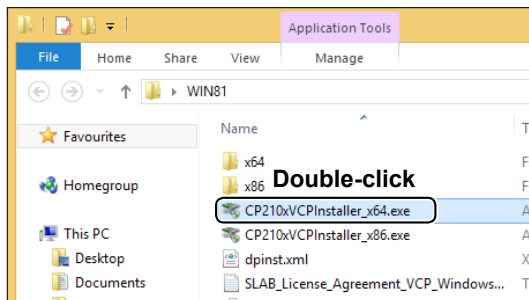
For Windows 8.1

NOTE:

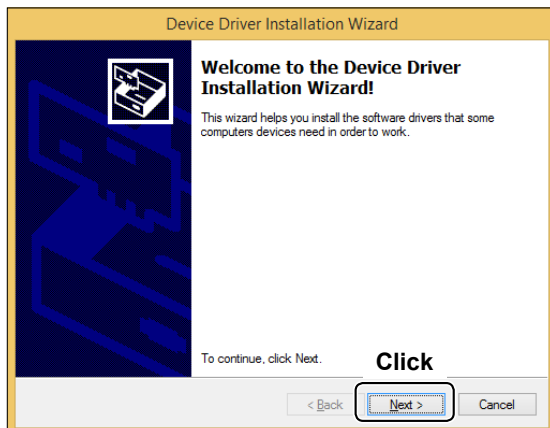
- **NEVER** connect the USB cable between the network device and the PC until the USB driver has been installed. Disconnect the cable, if connected, before starting the USB driver installation.
- This USB driver does not support the automatic recognition system.

① The displayed dialog, indications, or operations may differ slightly from the following instructions, depending on your system version and settings.

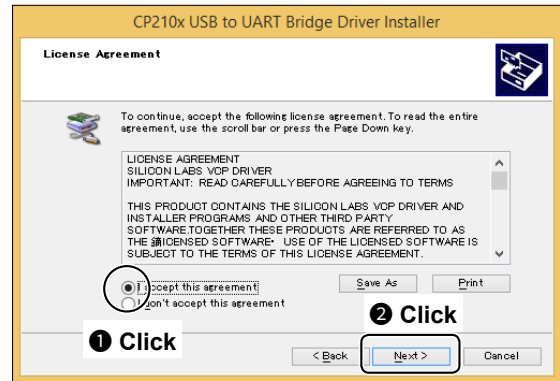
1. Confirm that the network device and PC are not connected, and no other application is running.
2. Extract the downloaded USB driver, and then open the folder that contains the installer.
3. Double-click the USB driver installer in the “WIN81” folder.
 - If you want to install the driver on a 32 bit OS, double-click “CP210xVCPInstaller_x86.exe.”
 - If you want to install the driver on a 64 bit OS, double-click “CP210xVCPInstaller_x64.exe.”



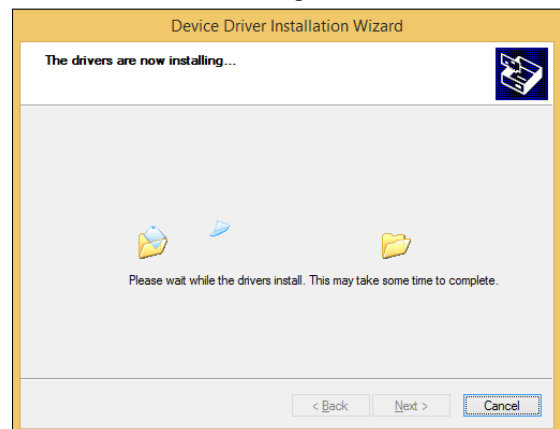
4. When the “User Account Control” dialog is displayed, click <Yes>.
5. When the installation screen is displayed, click <Next>.



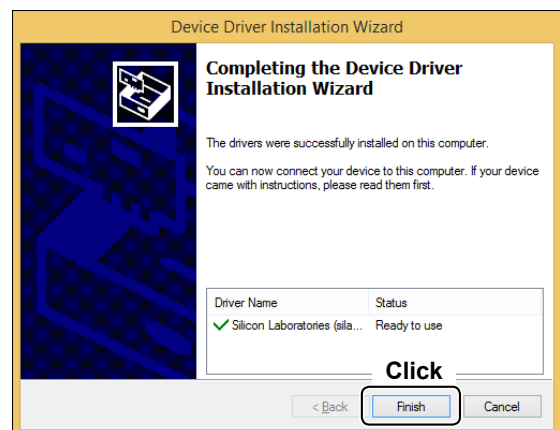
6. The “License Agreement” dialog is displayed. Read the agreement, click the radio button next to “I accept this agreement,” and click <Next>.



7. Windows starts installing the driver.



8. After the installation has completed, click <Finish>.



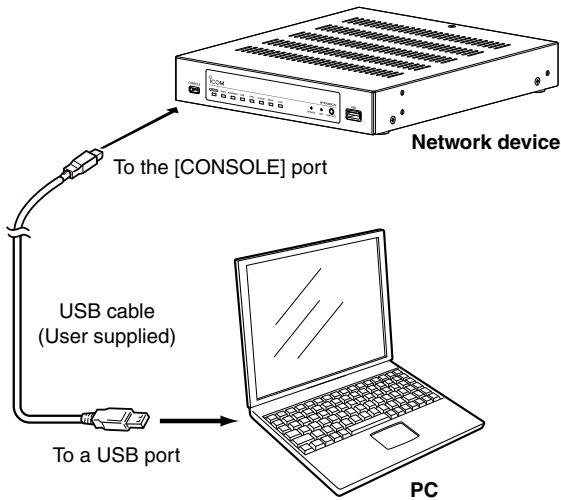
➤ Continued on the next page.

3. INSTALLING THE DRIVER

For Windows 8.1 (Continued)

9. Connect the USB cable between the network device and the PC, as shown below. Then, turn ON the device.

① Confirm the USB cable connector shape.

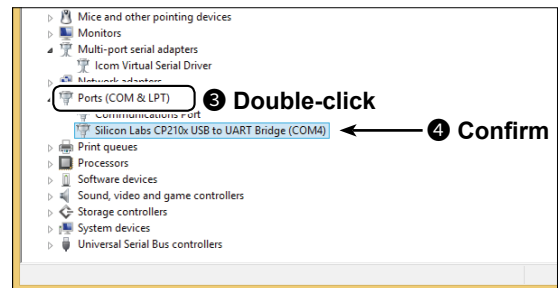
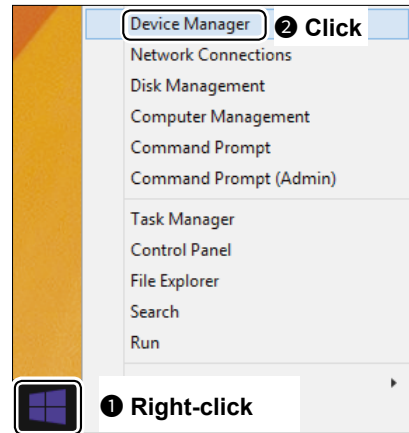


10. The installation icons are displayed on the taskbar shown below, then Windows starts installing the driver.



- After the driver installation has completed, the installation icons disappear.
- Depending on your system version and settings, you may be prompted to restart the PC. In this case, follow the instructions on the screen.

11. Follow the steps shown below to confirm in “Device Manager” that the USB driver has been successfully installed.



- When the driver is completely installed, “Silicon Labs CP210x USB to UART Bridge (COM*)” is displayed. The screen shows the USB serial COM port number “4.”
 - The COM port number may differ, depending on the PC environment.
 - If “!” or “x” is displayed on the “Device Manager” screen, the driver may not be properly installed. In such a case, first uninstall the USB driver, then reinstall it.

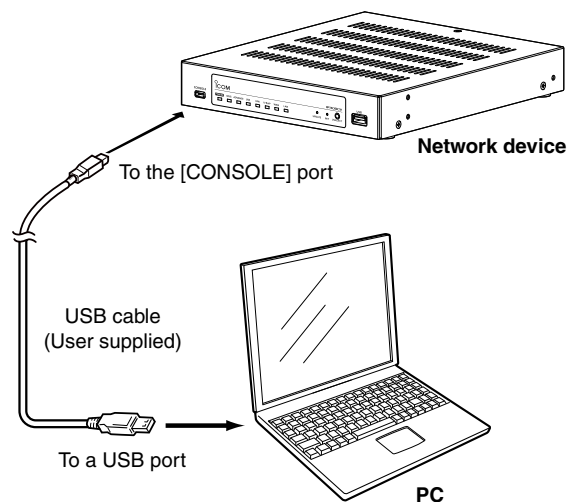
4. FOR YOUR REFERENCE

4-1 Terminal software setting

Follow the steps below to access the network device with a terminal software, when the IP address of the device is unknown.

1. Confirm that the network device is turned OFF, connect the USB cable between the device and the PC, as shown below. Then, turn ON the device.

① Confirm the USB cable connector shape.



2. Open a terminal software on your PC.
3. After installing the USB driver, set the serial port settings in the terminal software as follows:

- **Port:** Check the COM port number setting on your PC
- **Baud rate:** 115200 bps
- **Data:** 8 bit
- **Parity:** None
- **Stop:** 1 bit
- **Flow control:** None

4. When the COM port setting is finished, press the [Enter] key.
 - The login prompt with the device name is displayed. (For example: "IP1100CV> login:")
- ① After you have successfully logged in to the device, you can display the available command list by pressing the [Tab] key.

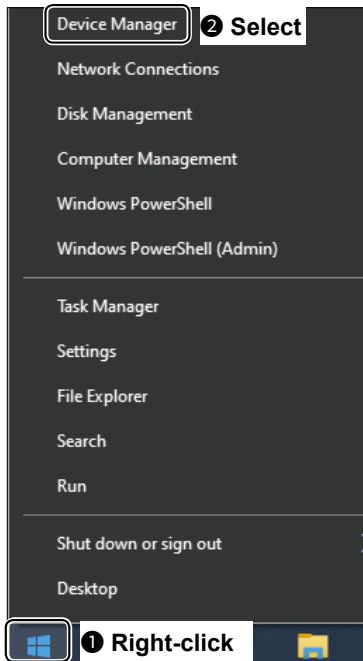
4. FOR YOUR REFERENCE

4-2 COM Port setting

To change the COM Port number setting after you have installed the USB driver, connect the network device to the PC first, and then turn ON the device.

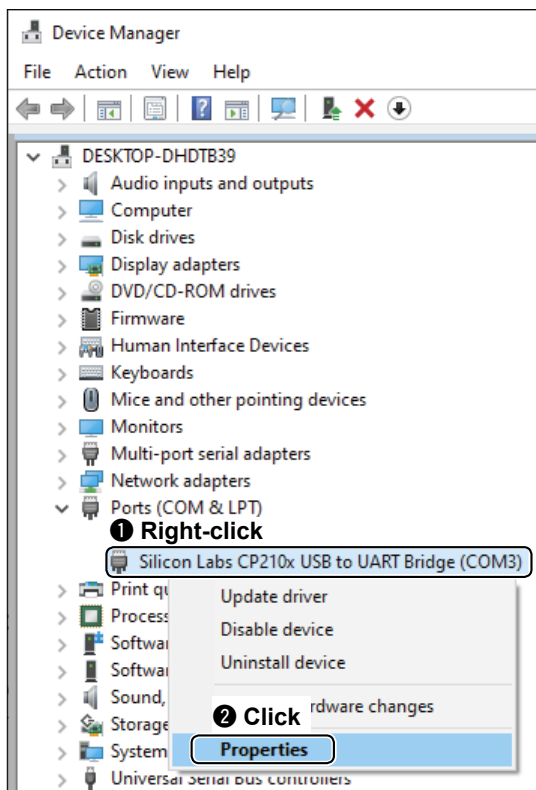
① The following steps are based on Windows 10.

1. Right-click the Windows icon on the taskbar and select "Device Manager."

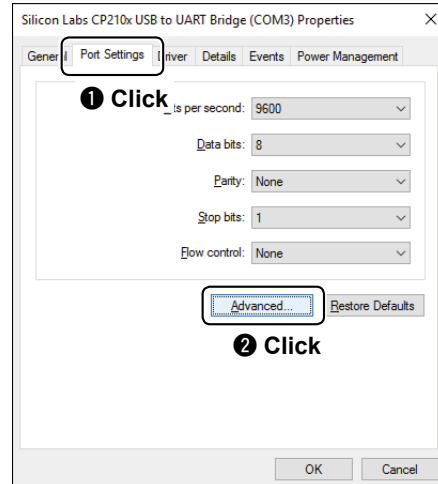


2. Right-click "Silicon Labs CP210x USB to UART Bridge (COM*)" and click "Properties."

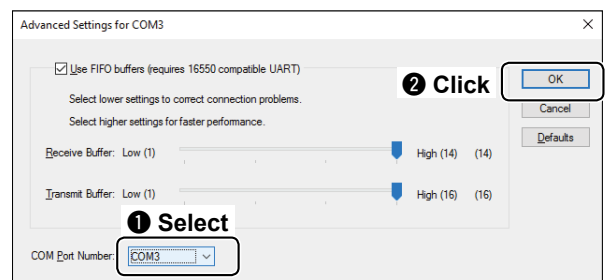
① The COM port number is displayed instead of "*."



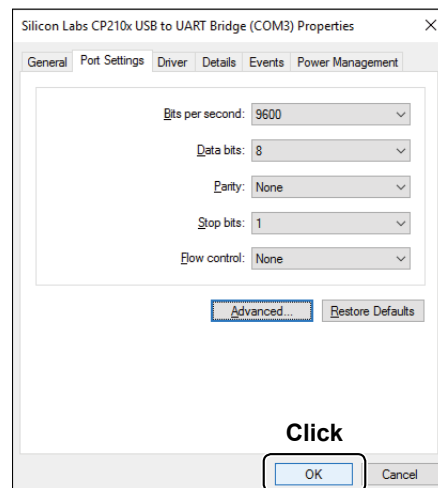
3. Click the [Port Settings] tab, then click <Advanced...>.



4. Select the COM port number, then click <OK>.



5. Click <OK> to close the screen.



4. FOR YOUR REFERENCE

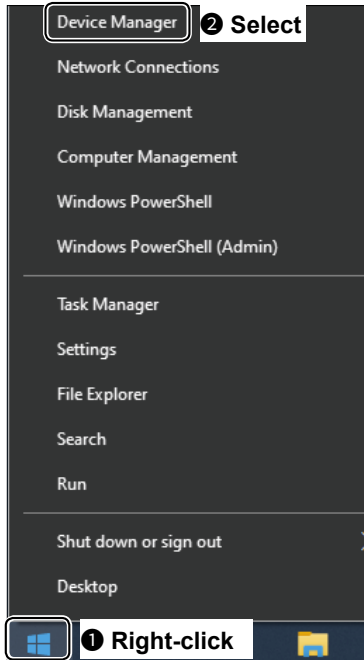
4-3 Uninstalling the driver

With the USB driver installed on the PC, connect the network device to the PC with the USB cable and turn ON the device to uninstall the driver.

① The following steps are based on Windows 10.

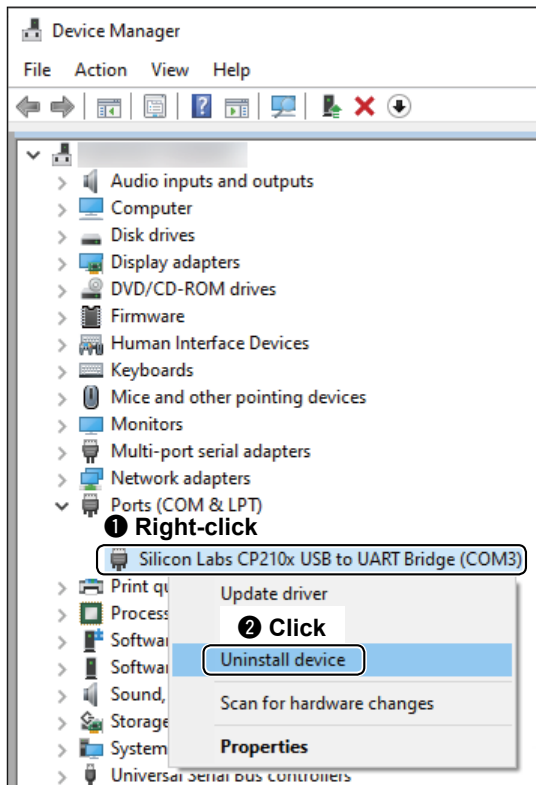
For Windows 11/Windows 10

1. Right-click the Windows icon on the taskbar and select “Device Manager.”
3. Check the box next to “Delete the driver software for this device.” and click <Uninstall>.



2. Right-click “Silicon Labs CP210x USB to UART Bridge (COM*)” and click “Uninstall device.”

① The COM port number is displayed instead of “*.”

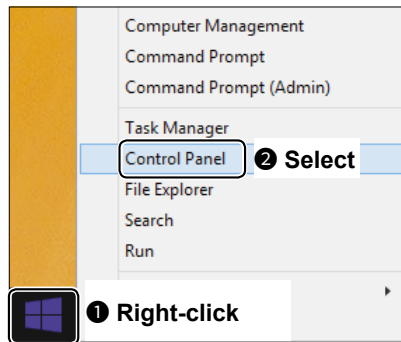


4. FOR YOUR REFERENCE

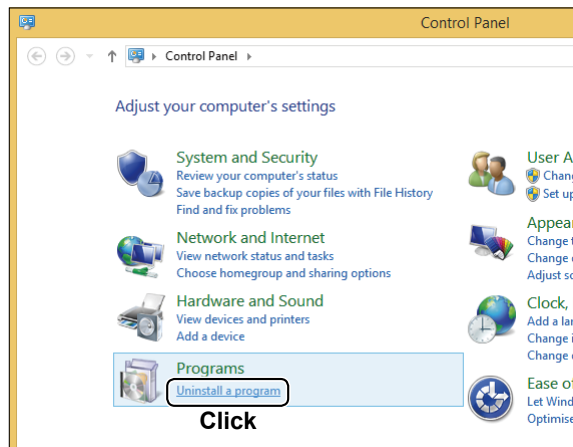
4-3 Uninstalling the driver (Continued)

For Windows 8.1

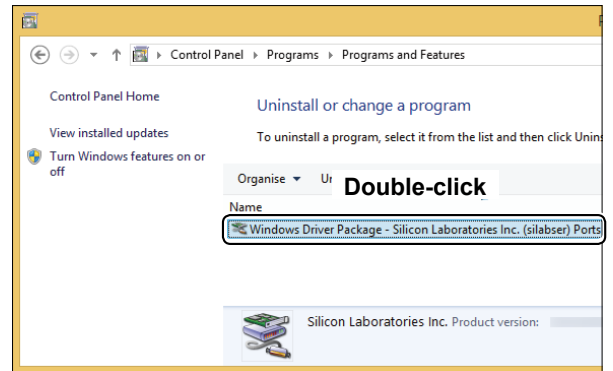
1. Right-click the Windows icon on the taskbar and select "Control Panel."



2. Click "Uninstall a program."



3. Double-click "Windows Driver Package - Silicon Laboratories Inc. (silabser) Ports."
 - When the "User Account Control" dialog is displayed, click <Continue>.



4. Click <Yes> to uninstall the driver.