

4. STARTING THE RS-AP3

- 1

Click the RS-AP3 icon in the Start menu.

 - You can also start the software by simply double-clicking the RS-AP3 icon on your desktop.
 - Make sure you are logged in as the administrator.
- 2

If the “User Account Control” window appears, click [Yes] to continue.
- 3

Follow the instructions and enter a desired User ID and a Password of up to 31 characters and symbols.

 - Use numbers, characters and letters (both lower and upper case).
- 4

Select the access point that you will be managing on the displayed software screen.

 - Refer to the RS-AP3 instruction manual for more details on the settings.

NOTE on the USB flash drive:

- The USB flash drive must be inserted into the USB port when:
 - installing the RS-AP3.
 - starting the RS-AP3 for the first time.
 - saving or opening a setting file.
 - synchronizing with the mirroring function.
- Remove the USB flash drive from the USB port before restarting or shutting down the PC, otherwise you may lose your data, or damage the device.
- Remove the USB flash drive after setting the wireless access points.

NOTE on the User ID and Password:

The next time you start the RS-AP3, you will need to enter the User ID and the password that you entered.

Login to RS-AP3

Login settings for RS-AP3.
Enter User ID, Password and Password (Confirm).

User ID

Password

Password (Confirm)

OK

Cancel

- Without the User ID and Password, you cannot start the RS-AP3
- If you click [Initialize Password], the User ID and Password are cleared, and will have to be reentered. To open the setting files saved with a different User ID and Password, enter the ones that you entered when you saved them.

FURTHER INFORMATION

◇ Removing the USB flash drive

①

Click the <Safely Remove Hardware and Eject Media> icon in the task tray, and then click <Eject CD Drive (E:) ICOM>, as shown below.

Open Devices and Printers

Device

- Eject CD Drive (E:) ICOM

- Eject REMOVABLE (F:)

②

Click the <Safely Remove Hardware and Eject Media> icon in the task tray again, and then click <Eject REMOVABLE (F:)>

- Refer to your PC’s instruction manual if the <Safely Remove Hardware and Eject Media> icon does not appear in your task tray.

③

Remove the USB flash drive when the <Safe To Remove Hardware> message is displayed.

◇ RS-AP3 license

Number of access points managed

- 3000 access points (Max.)/64 groups (Total)
- 128 access points (Max.)/1 group

Number of groups

- 64 groups (Total)

◇ Using the Mirroring function

To use the Mirroring (Primary/Secondary) function when an error occurs, you will need another RS-AP3 (USB flash drive). Install the RS-AP3 on the PC (for Primary/Secondary) and synchronize the settings.

- Refer to the RS-AP3 instruction manual for details.

◇ Uninstalling the RS-AP3

Follow the instructions below to uninstall the RS-AP3.

- Make sure you are logged in as the administrator.

①

Click the <Start> button, and then click <Settings>.

②

Click <Apps>.

③

Click <Icom RS-AP3>, and then click <Uninstall>.

④

Click [Yes] in the uninstallation confirmation dialog.

⑤

If the “User Account Control” dialog appears, click [Yes] to uninstall.

ICOM

INSTRUCTIONS

ACCESS POINT MANAGEMENT TOOL

RS-AP3

Thank you for choosing this Icom product.
The RS-AP3 ACCESS POINT MANAGEMENT TOOL allows you to manage multiple wireless access points.

IMPORTANT

READ ALL INSTRUCTIONS carefully and completely before using the RS-AP3.

SAVE THESE INSTRUCTIONS — These instructions contain important safety and operating instructions for the RS-AP3.

PRECAUTIONS

⚠

WARNING! NEVER disassemble, modify or repair the RS-AP3 USB flash drive. This may result in an electrical shock, cause a fire or damage the drive.

⚠

WARNING! NEVER operate or touch the RS-AP3 USB flash drive with wet hands. This may result in an electrical shock or damage the drive.

⚠

CAUTION: DO NOT place the RS-AP3 USB flash drive in direct sunlight. This could damage the drive.


CAUTION: DO NOT use harsh solvents such as benzine or alcohol to clean the RS-AP3 USB flash drive, as they can damage the drive’s surfaces. If the drive becomes dusty or dirty, wipe it clean with a dry, soft cloth.

Always place the RS-AP3 USB flash drive in a secure place to avoid inadvertent use by unauthorized persons.

OPERATION NOTE

- Ensure that your PC supports USB port(s) operation by confirming the Universal Serial Bus controller is in the PC’s Device Manager.
- We recommend that you insert the RS-AP3 USB flash drive to the PC’s USB port. Connecting it through a hub may damage the drive or make it work improperly.
- When operating the PC or external devices, see their instruction manuals for operational details.

DISPOSAL



The crossed-out wheeled-bin symbol on your product, literature, or packaging reminds you that in the European Union, all electrical and electronic products, batteries, and accumulators (rechargeable batteries) must be taken to designated collection locations at the end of their working life. Do not dispose of these products as unsorted municipal waste. Dispose of them according to the laws in your area.

EXPLICIT DEFINITIONS

WORD	DEFINITION
⚠ WARNING!	Personal injury, fire hazard or electric shock may occur.
CAUTION	Equipment damage may occur.
NOTE	If disregarded, inconvenience only. No risk of personal injury, fire or electric shock.


FCC INFORMATION

This device complies with part 15 of the FCC rules. Operation is subject to the following two conditions: (1) This device may not cause harmful interference, and (2) this device must accept any interference received, including interference that may cause undesired operation.

This equipment has been tested and found to comply with the limits for a Class B digital device, pursuant to part 15 of the FCC Rules. These limits are designed to provide reasonable protection against harmful interference in a residential installation. This equipment generates, uses, and can radiate radio frequency energy and, if not installed and used in accordance with the instructions, may cause harmful interference to radio communications. However, there is no guarantee that interference will not occur in a particular installation. If this equipment does cause harmful interference to radio or television reception, which can be determined by turning the equipment off and on, the user is encouraged to try to correct the interference by one or more of the following measures:

- Reorient or relocate the receiving antenna.
- Increase the separation between the equipment and receiver.
- Connect the equipment into an outlet on a circuit different from that to which the receiver is connected.
- Consult the dealer or an experienced radio/TV technician for help.

ABOUT CE



Versions of the RS-AP3 which have the “CE” symbol on the product, comply with the essential requirements of the 2014/30/EU directive for Electromagnetic Compatibility and the 2001/95/EC directive for General Product Safety.

– 1 –

Icom Inc.
1-1-32 Kamiminami, Hirano-ku, Osaka 547-0003, Japan
Apr. 2022

A7169W-1EX-3 Printed in Japan
© 2014-2022 Icom Inc.

– 4 –

1. BEFORE STARTING THE RS-AP3

Follow the instructions and install the RS-AP3 software. The RS-AP3 USB flash drive must be inserted into the PC when you install and also when you first run the RS-AP3 software.

• To operate the software, refer to the RS-AP3 instruction manual.

■ System requirements

(As of April 2022)

◇ PC

- CPU Clock speed..Dual Core 2 GHz or more
32 bit (x86) or 64 bit (x64) processor
- System memory2 GB or more
- Hard diskAt least 2 GB of free space.

◇ Operating System

- Windows Server 2019 (32/64bit)
- Windows Server 2016 (32/64bit)
- Windows Server 2012 R2 (32/64bit)
- Windows Server 2012 (32/64bit)
- Windows 11 (64bit)
- Windows 10 (32/64bit)
- Windows 8.1 (32/64bit)

- GUI environment only.
- Except for Windows on ARM, such as Windows RT.
- These Instructions are based on using Windows 10.
- Display indications may differ, depending on the Operating System.

About the RS-AP3 instruction manual:

Please refer to the software instruction manual for assistance with functions or settings.
To open the instruction manual, click “Help” in the Top menu of the software and select “Manual.”

- Adobe Acrobat Reader is required to read the downloaded instruction manual. (PDF File)
If your PC does not have Adobe Acrobat Reader, download it from the Adobe website.

2. RS-AP3 INSTALLATION NOTE

Beforehand, you must set the “IP Address,” “Management Tools” and so on, in the wireless access point setting screen.

- As of April 2022, the only wireless access point that can be used with the RS-AP3 is Icom’s AP-90M and AP-95M.
- Refer to the operating guide for the RS-AP3 or for the access point for more details on setting wireless access points.

The RS-AP3 resides as a Windows service. Therefore, you can manage the wireless access points, using a setting file saved without opening the software.

- Modifications are reflected to the service when the contents modified with the software is overwritten.
- Even if an originally saved setting file is loaded, overwrite the settings.

Icom and the Icom logo are registered trademarks of Icom Incorporated (Japan) in Japan, the United States, the United Kingdom, Germany, France, Spain, Russia, Australia, New Zealand, and/or other countries.

Microsoft, Windows and Windows Server are trademarks of the Microsoft group of companies.

Adobe, Acrobat, and Reader are either registered trademarks or trademarks of Adobe Systems Incorporated in the United States and/or other countries.

All other products or brands are registered trademarks or trademarks of their respective holders.

■ USB flash drive and its files

The RS-AP3 and the USB flash drive are linked to each other. Therefore, the RS-AP3 will not work if you made a copy of the files saved in the USB flash drive on a hard disk or other devices.

- “REMOVABLE” and “CD Drive ICOM” windows appear when the USB flash drive is attached to the PC.

■ Network note

Configure the network communication between the RS-AP3 and the wireless access point so that the band and delay properties can operate reasonably well.

■ Firewall Users

If you are using a firewall, anti-virus software, internet security software or other protection, communication may be blocked and not work properly. Confirm the firewall settings before you start using the RS-AP3.

Information about the communication ports used:

UDP 9991, UDP 9992, UDP 9993, UDP 9994, UDP 9995, TCP 9994, TCP 9995

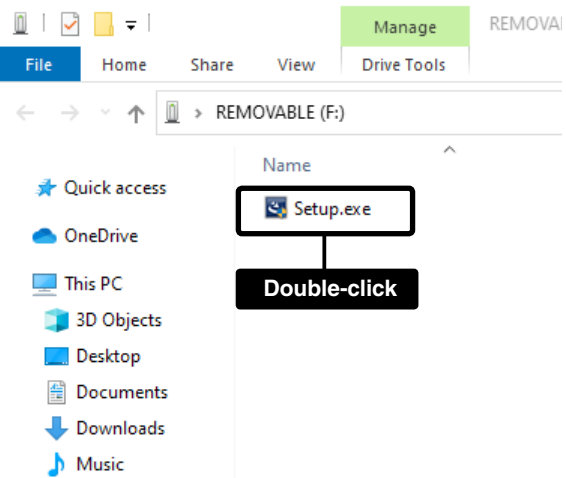
3. INSTALLING THE RS-AP3

These Instructions are based on using Windows 10.

- 1 • Make sure Windows has completed its start-up, and no other applications are running.
• Sign in to your PC as an administrator.

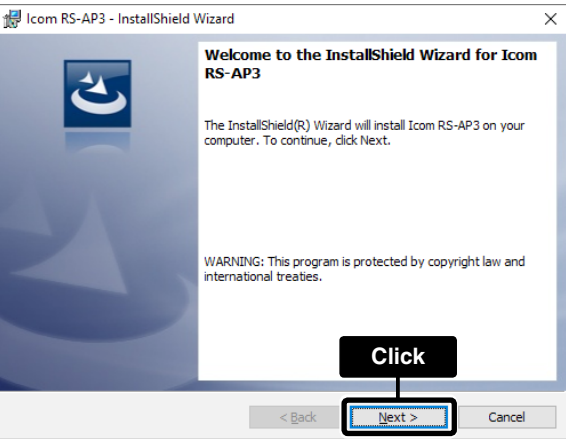
- 2 Insert the USB flash drive into the USB port.

- 3 Double-click “Setup.exe” on the REMOVABLE drive.



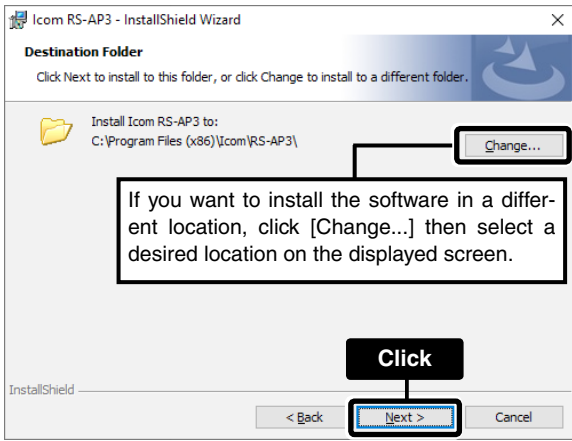
- 4 If the “User Account Control” window appears, click [Yes] to continue.

- 5 Click [Next >].

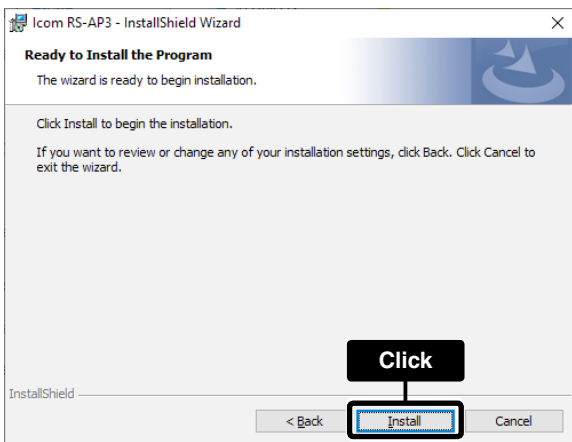


- ① If the software has already been installed on the PC, the Program Maintenance screen appears.

- 6 Click [Next >].



- 7 Click [Install].



- 8 Click [Finish].

