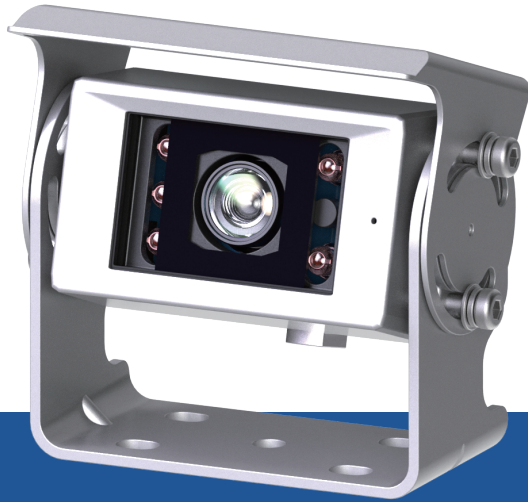


Agricultural



ECC-M390D-02S

- CVBS / A-HD Selectable (MIR / NOR Optional) (Patented)
- 2.1M Pixel CMOS CAMERA
- 140° Diagonal Angle of View
- High Performance in Low Light Condition
- Operating Temperature -40°C ~ 85°C (-40°F ~ 185°F)
- Built in Microphone

SPECIFICATIONS

Image Type	2.1 Mega pixel CMOS Sensor
Image Size	1/3 Inch
Angle of View	Diagonal : 140° / Horizontal : 120° / Vertical : 60° Optional : 130° / 92° / 40°
Synchronization	Internal
Horizontal Resolution	CVBS : More than 700TV lines A-HD : More than 1,000TV lines
Minimum Illumination	0 Lux w/ IR LED
Signal to Noise Ratio	Better than 50dB (at AGC off)
Power Input	DC 12V / DC 10V ~ 32V (Optional)
Vibration	10G
IP Rating	IP69K
Housing	Window : Flat glass Body : Aluminium
Operating Temp.	-40°C ~ 85°C (-40°F ~ 185°F)
Weight	Approx. 230g (Camera Only)

DIMENSIONS

